

fy 2025 annual report



a message from cswd's board chair and executive director

As we reflect on the past year at CSWD, we are proud to share several milestones, improvements, and initiatives that continue to move our District—and our community—toward a more sustainable future.

FINANCIALS

This year, CSWD generated \$18.9 million in total revenues and \$15.8 million in total expenses. We received a \$1.5 million grant from the VT Department of Environmental Conservation, realized a \$375,000 gain on the sale of real estate, and both our Organics Recycling Facility and Drop-Off Centers delivered positive net operating income before depreciation. We closed FY25 in a strong financial position, with operating reserves equal to 4.3 months.

WASTE DIVERSION

Our annual Waste Diversion Report shows encouraging progress. While total solid waste generation increased to 317,905 tons, the amount of municipal solid waste (MSW) diverted from the landfill rose by 13.8% to 100,719 tons. Our overall MSW diversion rate is now 54.7%, continuing a long-term upward trend as residents, businesses, and institutions embrace better waste reduction practices.

NEW LOCATION FOR THE MATERIALS RECYCLING FACILITY (MRF)

After several years of challenges, we are pleased to share that CSWD purchased a new 38-acre parcel on Redmond Road in Williston to serve as the future home of our state-of-the-art MRF. The \$38 million project—funded through CSWD reserves, grants, and a \$22 million bond approved by Chittenden County voters—is slated to open in January 2027.

REDUCING CONTAMINATION AT THE ORGANICS RECYCLING FACILITY

We've made significant progress in improving compost quality by reducing contamination in the finished product, and this year we took an important next step. Our team at the Organics Recycling Facility developed a new contamination policy aimed at preventing contaminants from entering the composting process in the first place. The policy draws from our MRF Quality Control Policy and incorporates input from compost facilities nationwide, organics haulers, food scrap generators, and our own Outreach, Communications, and Compliance teams. Addressing contamination at the source will help us continue producing premium compost and soil products.

EXPANDED SERVICES AT THE BURLINGTON DROP-OFF CENTER

We made major upgrades at our Burlington Drop-Off Center on Pine Street. In addition to food scraps and blue-bin recycling, the site now accepts household trash (excluding bulky items), scrap metal, shredded paper, and wood ash. We also expanded hours to a five-day schedule—Tuesday through Saturday, 8:00 a.m. to 3:30 p.m.—bringing it in line with our five other Drop-Off Centers.

HOUSEHOLD SURVEY FINDINGS

We partnered with UVM's Center for Rural Studies to survey Chittenden County residents to better understand community habits and perceptions around waste reduction.

With 1,873 responses, the survey revealed that 97% of residents believe it's important to reduce the waste they create. Nearly 95% of Drop-Off Center users find our facilities easy to use. When it comes to food scraps, residents use a mix of strategies: 34% compost at home, 23% rely on haulers, 15.7% bring scraps to our DOCs, and 11.4% still throw them away. We will use these insights—along with the support of Place Creative—to strengthen our communications and outreach efforts.

NEW CSWD WEBSITE

We launched a redesigned CSWD website that makes it easier for residents and businesses to find what they need. One of the key features is our improved A-Z Guide, which helps users quickly determine how to properly recycle, compost, or dispose of almost any item.

BATTERY BLITZ SUCCESS

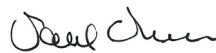
This year's Battery Blitz, run in partnership with Call2Recycle and Earth Rangers, brought students together from across Vermont to collect and recycle used batteries. Underhill Central School topped the leaderboard and won the \$1,000 prize. In total, seven schools collected more than 4,000 pounds of batteries—the weight of 15 Vermont black bears—demonstrating the powerful impact of community engagement.

ENVIRONMENTAL LEADERSHIP AWARD

Finally, we are thrilled to share that CSWD received the Environmental Leadership Award from the Northeast Recycling Council for our solar glasses collection program with Astronomers Without Borders. Together, we diverted 115,020 solar eclipse glasses from the landfill after the April 2024 eclipse, giving them new life in communities around the world.

Thank you for your continued commitment to reducing waste and protecting our environment. Your actions make these achievements possible, and we look forward to another year of progress together.




Paul Ruess
Chair, Board of Commissioners




Sarah Reeves
Executive Director

who we are

We are a municipal district created in 1987 to oversee and manage solid waste in Chittenden County.

CSWD serves about a quarter of the population of Vermont (169,481 residents and 8,939 businesses)* with facilities, programs, and expertise developed over our 38-year history.

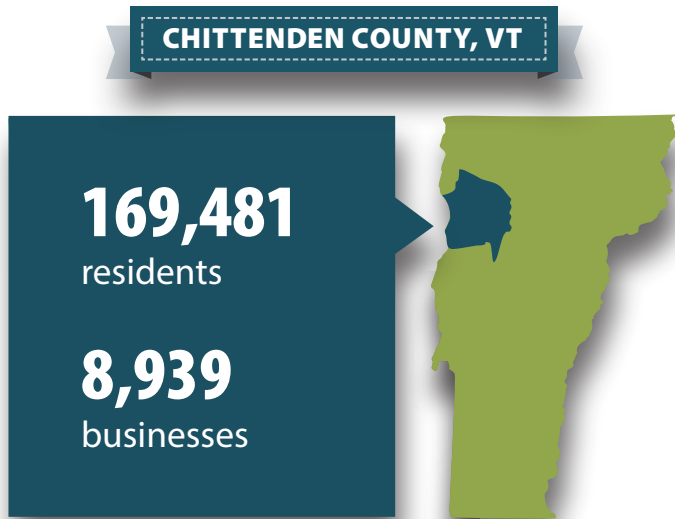
**2023 data. Sources: U.S. Census and VT Dept. Of Labor*

OUR MISSION

The Chittenden Solid Waste District's mission is to reduce and manage the solid waste generated within Chittenden County in an environmentally sound, efficient, effective and economical manner.

OUR VISION

Products are designed to be reused or recycled and our community fully participates in minimizing disposal and maximizing reuse and recycling.



2023 data. Sources: U.S. Census and VT Dept. of Labor

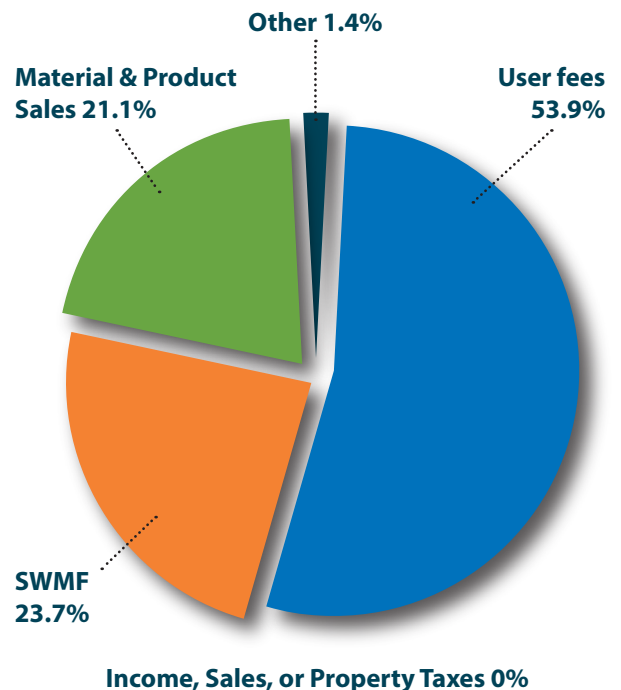
HOW WE'RE FUNDED

Our revenue comes from three primary sources:

- **User fees** on incoming material at our facilities;
- **The Solid Waste Management Fee (SWMF)**, a per-ton fee on material sent to the landfill;
- **Material and product sales** from material we collect and process at our facilities and sell;
- A small, variable percentage of our funding comes from **State grants for hazardous waste and other materials management**.

We are not funded by Income, Sales, or Property tax dollars.

FY25 REVENUE \$16.5M (unaudited)



what we do

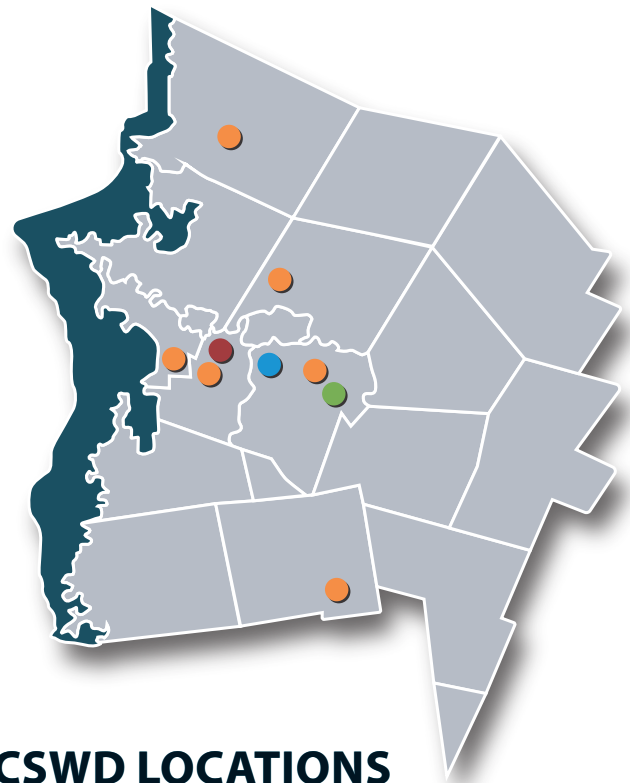
REDUCE WASTE

- › **Educate residents, businesses, schools, and event leaders** on waste prevention and diversion
- › **Promote community reuse options**
- › **Process leftover paint** from residents and businesses into Local Color Paint
- › **Maintain and enforce our Ordinance**, which includes waste prevention and diversion requirements
- › **Help our members** comply with federal and state solid waste laws
- › **Provide facilities and tools** to help members prevent waste and maximize diversion from the landfill to recycling, composting, and other resource recovery
- › **Advocate for state-wide policies** that will reduce waste

MANAGE MATERIALS

Our facilities:

- › **The only municipally owned Materials Recycling Facility** (blue-bin recyclables sorting center) in Vermont
- › **Six regional Drop-Off Centers** for household trash, recycling, organics, and special materials
- › **A comprehensive hazardous waste program for households and small businesses** that includes a permanent year-round collection facility *and* a seasonal mobile collection unit
- › **The state's largest Organics Diversion Facility** (home of Green Mountain Compost) turning food scraps and yard trimmings into compost and soil blends supporting local soils



CSWD LOCATIONS

- **Drop-Off Centers**
- **Environmental Depot**
- **Materials Recycling Facility**
- **Organics Recycling Facility** (Green Mountain Compost)

SUPPORT OUR MEMBERS

- › **Technical expertise and support** for waste-related RFPs and studies
- › **Grant funding**
 - › Community Cleanup Fund for all member towns
 - › Waste Reduction Container and Project Grants
- › **Brokering and investigation** of beneficial use options for biosolids
- › **Green Up Vermont donation** on behalf of all member towns;
- › **Outreach and education**

how we're doing

This graphic shows three key measurements of all the materials that individuals and businesses in Chittenden County, VT generated in Calendar Year 2025:

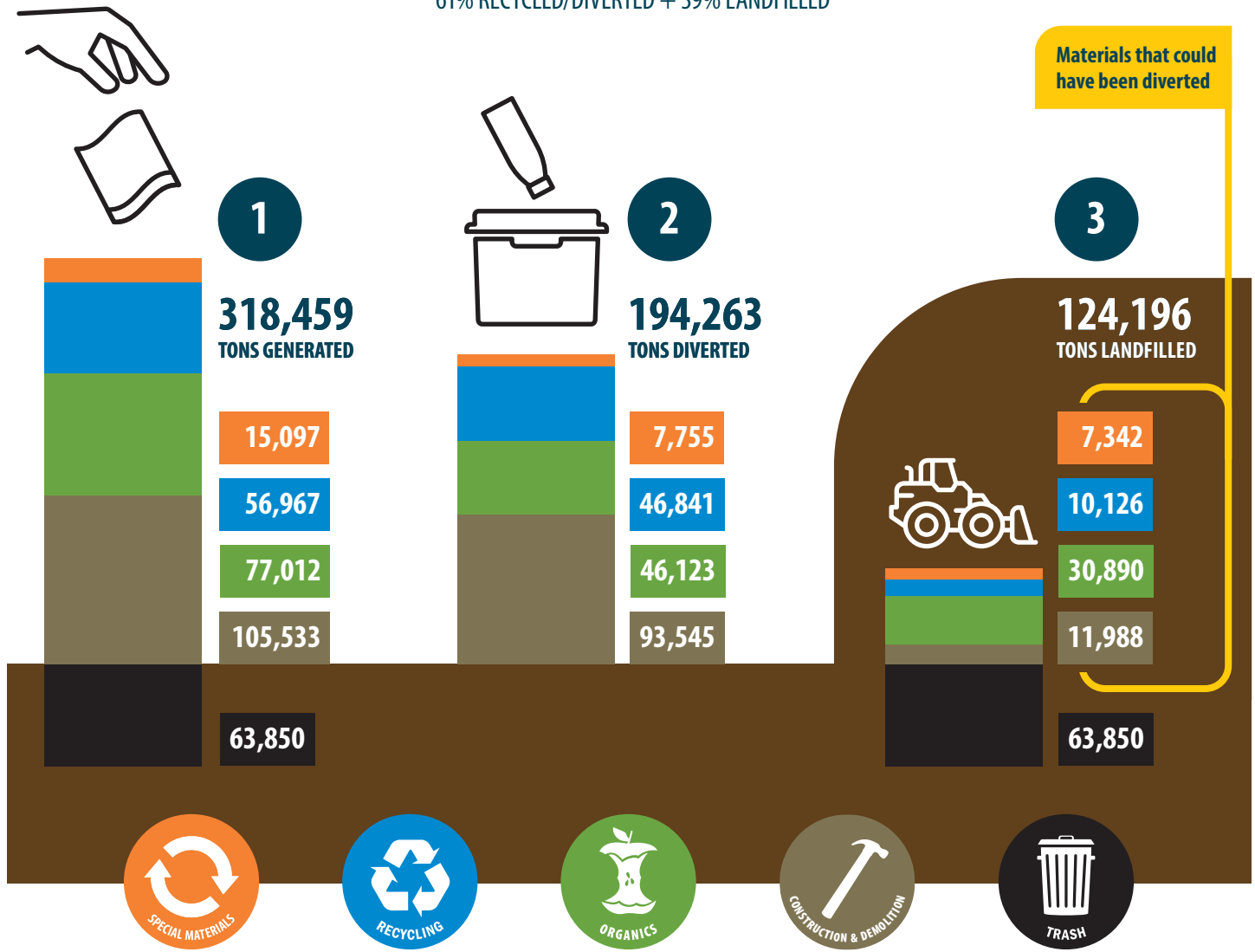
1. Total waste and recyclable/compostable materials generated in Chittenden County in 2025.
2. Total materials kept out of the landfill and recycled or composted in 2025.
3. Total materials (including recyclables and compostable materials) landfilled in 2025.

Note: "Trash" is made up of materials that can't be recycled or composted.

Full details are available in the 2024 [CSWD Diversion Report](#).

100% MATERIALS GENERATED (318,459 tons)

61% RECYCLED/DIVERTED + 39% LANDFILLED



financial reports

STATEMENTS OF NET POSITION

As of June 30, 2025

Preliminary and Unaudited

ASSETS	FY2025	FY2024
Current Assets		
Cash & Cash Equivalents	9,428,818	8,805,596
Investments	1,639,345	4,479,873
Receivables (Net of Allowance)	2,479,451	2,230,204
Inventories	620,925	292,826
Prepaid Expenses	87,938	44,090
Total Current Assets	14,256,478	15,852,589
Noncurrent Assets		
Land and Other Assets Not Depreciated	10,040,102	6,112,270
Recycling Facility Project	12,437,925	11,681,683
Other Capital Assets Net of Accumulated Depreciation	7,305,998	7,900,249
Right of use Lease Asset	289,576	393,565
Total Noncurrent Assets	30,073,602	26,087,767
Total Assets	44,330,079	41,940,356
LIABILITIES		
Current Liabilities		
Accounts Payable	870,191	1,442,592
Accrued Expenses	785	5,266
Accrued Payroll & Benefits Payable	148,503	48,989
Unearned Revenue	8,786	108,983
Lease Payable (current)	106,590	-
Post Closure Costs Payable (current)	138,301	138,301
Total Current Liabilities	1,273,156	1,744,130
Noncurrent Liabilities		
Bond Payable	10,000,000	10,000,000
Capital Lease Payable (noncurrent)	182,986	393,565
Compensated Absences Payable (noncurrent)	295,882	296,640
Post closure Costs Payable (noncurrent)	378,379	378,379
Total Noncurrent Liabilities	10,857,248	11,068,584
Total Liabilities	12,130,404	12,812,715
NET POSITION		
Net Investment in Capital Assets	19,784,026	15,694,201
Restricted	1,951,062	951,142
Unrestricted	10,464,588	12,482,299
Total Net Position	32,199,676	29,127,641

financial reports

STATEMENT OF REVENUE, EXPENSES AND CHANGES IN NET POSITION

For the Year Ended June 30, 2025

Preliminary and Unaudited

OPERATING REVENUES:

Tipping Fees	8,880,059
Solid Waste Management Fees	3,900,128
Sale of Materials, Net	3,472,015
License Fees	17,099
Other Revenues	36,418
Product Stewardship & Reimbursement	180,882
Total Operating Revenues	16,486,601

OPERATING EXPENSES:

Administration	1,910,094
Biosolids Program	1,550,598
Drop Off Centers	3,016,084
Enforcement	218,290
Finance	613,413
Hazardous Waste & Paint Recovery Program	931,103
Maintenance	680,672
Materials Recovery Facility	3,885,868
Organics Diversion Facility	1,199,307
Outreach & Communications	747,432
Property Management	80,562
Change in estimated future landfill post-closure costs	73,633
Depreciation	886,956
Total Operating Expenses	15,794,013
Operating Income	692,587

NON- OPERATING REVENUES (EXPENSES):

Grant Income	1,617,323
Investment Income	493,468
Net Gain (Loss) on Disposal of Assets	390,471
Rental Income	7,100
Total Non-Operating Revenue (Expense)	2,508,362
Change to Prior Period Adjustment	(128,915)
Change in Net Position	3,072,034
Beginning Net Position	29,127,641
Ending Net Position	32,199,676

Chittenden Solid Waste District

19 Gregory Drive
Suite 204
South Burlington, VT 05403

Phone: (802) 872-8100

Fax: (802) 878-5787

www.cswd.net



facebook.com/cswdvt



instagram.com/cswdvt



youtube.com/cswdvt

*This Annual Report is available at
www.cswd.net.*



Chittenden Solid Waste District