

ORGANICS RECYCLING FACILITY CONTAMINATION POLICY

Adopted by CSWD Board of Commissioners on 4/24/2024

Effective 07/01/2024

Amended on 10/23/24

Purpose:

This policy is to provide a procedure for inspecting incoming loads delivered to the CSWD Organics Recycling Facility (ORF) for contamination and the corrective actions to be taken with the intent to:

- 1) Remediate contamination of incoming loads;
- 2) Improve communications between organics haulers, their customers, state programs/personnel, ORF personnel, and CSWD staff regarding material specification requirements,
- 3) Maximize ORF operational efficiency, and
- 4) Minimize worker exposure to potentially harmful materials and ensure the safe and optimal operation of the ORF processing equipment.

Definitions:

Acceptable Organics —

- **Food Waste:**
 - All food scraps of any kind.
 - Certified, clearly labeled compostable bags used for lining food scrap containers.
 - Coffee filters & tea bags (paper only—no plastic tea bags).
 - Newspaper and untreated paper bags used to line food scrap containers.
 - Paper towels and napkins – only if they DO NOT contain body fluids or chemicals of any kind.
 - Wooden or bamboo stirrers, toothpicks (no plastic frills), chopsticks.
 - Uncoated paper leaf bags.
- **Yard Waste**
 - Leaves
 - Grass clippings
 - Weeds
 - Garden trimmings
 - House plants
 - Natural wood (tree trimmings, limbs, clean stumps, brush)

Contamination — Any material received in loads at the ORF other than Acceptable Organics.

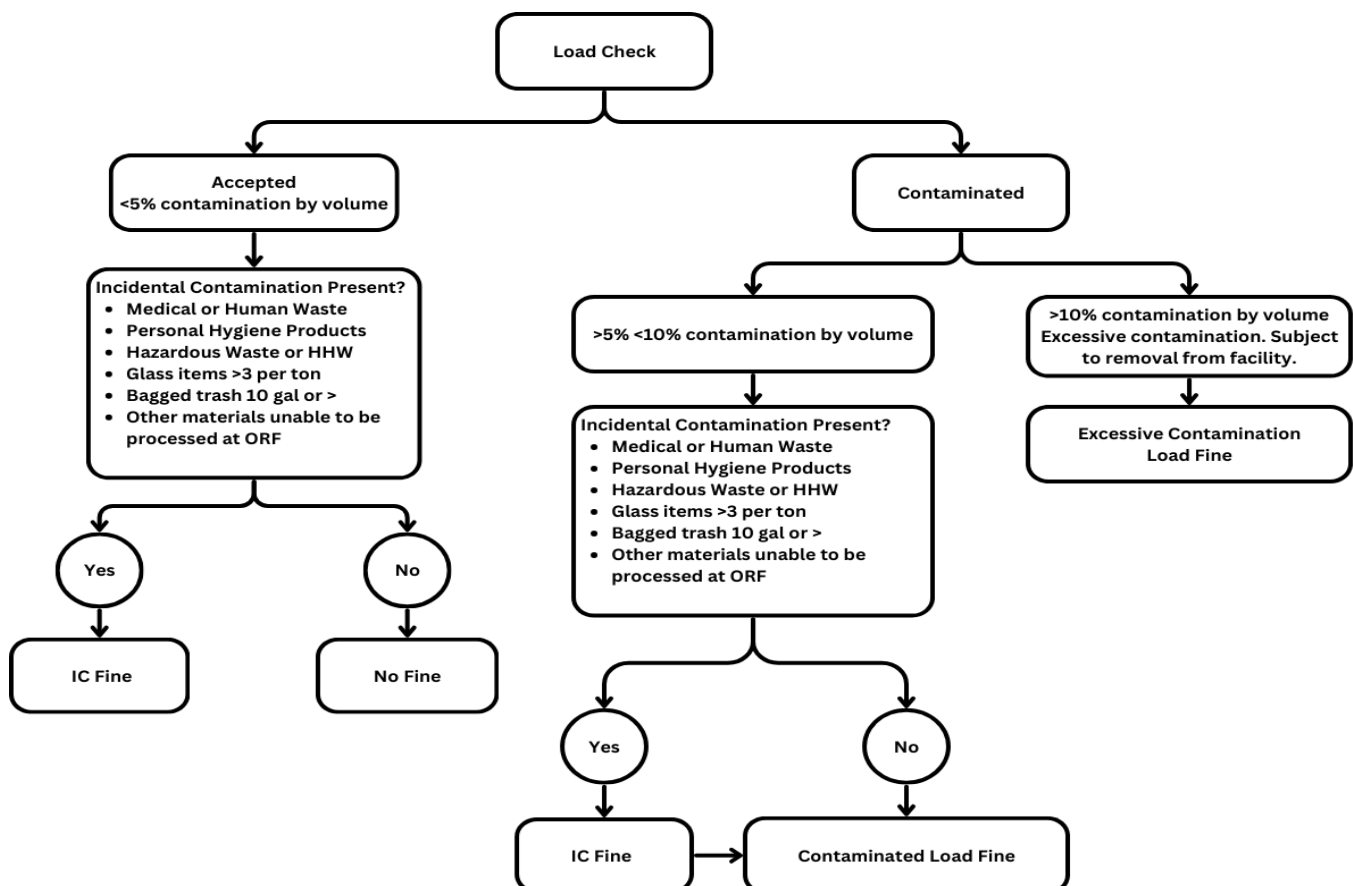
Contaminated Load — A load of material received at the ORF that contains more than 5% contamination by volume resulting in a fine.

Excessively Contaminated load — A load of material received at the ORF that contains more than 10% contamination by volume resulting in a fine. These loads may be removed from the site and diverted to a transfer station for landfill disposal.

Incidental Contamination — A load of material received at the ORF that contains particularly problematic materials. Receipt of any of these materials as listed below will result in a fine. The fine for incidental contamination can be issued if the load is below the 5% Contaminated Load threshold or in addition to a Contaminated Load fine but not in addition to Excessively Contaminated loads.

- 1 or more 10 gal or greater plastic bags containing trash.
- Glass Items exceeding 3 items per Ton.
- Hazardous waste or Household Hazardous Waste.
- Medical Waste or Human Waste.
- Personal Hygiene products including diapers and feminine hygiene products.
- Other materials unable to be processed at the ORF.

Procedures:



1. ORF personnel will inspect incoming loads once they are dumped. When necessary, a bucket loader operator will back-drag loads to make visualizing contamination easier.
2. If the load is deemed to be contaminated, CSWD staff will complete a contaminated load report and will aim to complete a contaminated load report and send the hauler a digital copy within two business days. All load reports will include CSWD Outreach Staff contact information and encourage the use of CSWD staff support to lessen the likelihood of future contaminated loads.
3. Any fine outlined on the contaminated load report will be billed to the hauler. The hauler shall pay the penalty for contaminated loads, and late fees and penalties for non-payment of fines in accordance with the CSWD Solid Waste Management Ordinance and any policies and procedures set forth by CSWD's finance department. Associated fines are outlined in the CSWD ORF Contamination Rates Table.