



ADMINISTRATIVE OFFICE

19 Gregory Drive, Suite 204
South Burlington, VT 05403

EMAIL info@cswd.net

TEL (802) 872-8100

www.cswd.net

**CHITTENDEN SOLID WASTE DISTRICT
FULL BOARD MEETING INSTRUCTIONS
FOR THE PUBLIC – REMOTE ACCESS**

Date: Wednesday, March 25, 2026
Time: 6:00 PM
Place: ZOOM MEETING INSTRUCTIONS

IMPORTANT:

CSWD will hold a hybrid Board of Commissioners Meeting. The virtual meeting is accessible by computer or phone. Members of the public, joining the meeting remotely, may join by clicking the link below. Following the meeting a recording will be available upon request.

You are invited to a Zoom webinar!

Join from PC, Mac, iPad, or Android:

<https://us02web.zoom.us/j/85644936481>

Webinar ID: 856 4493 6481

Phone one-tap:

+16465588656, 82206970838# US (New York)

+16469313860, 82206970838# US

Join via audio:

+1 646 558 8656 US (New York)

For those without internet access, call 802-872-8100 ext. 247 and leave a message to register for the meeting. A call-in number will be provided to you prior to the meeting.

Participants will be in listen only mode. Call in controls include: *6 – toggle mute/unmute and *9 to raise your hand.



ADMINISTRATIVE OFFICE

19 Gregory Drive, Suite 204
South Burlington, VT 05403

EMAIL info@cswd.net

TEL (802) 872-8100

www.cswd.net

**CHITTENDEN SOLID WASTE DISTRICT
REGULAR MEETING**

Date: Wednesday, March 25, 2026
Time: 6:00 PM
Place: **Hybrid Meeting - ZOOM Meeting or In-Person at CSWD Administrative Office
19 Gregory Drive, South Burlington**

*** (E) Indicates enclosures (D) Discussion Only

1. (E) **Agenda** (6:01 PM)
2. **Public Comment Period** (6:05 PM)
3. (E) **Consent Agenda** (6:10 PM)
 - 3.1 Minutes February 25, 2026; March 10, 2026
 - 3.2 Program Updates
 - 3.3 Finance- Fund Balances, Reserves, & Warrants
 - 3.4 Executive Director Update
4. (E) **MRF – Project Update** (6:15 PM)

Board Action Requested: Approve Potential Change Orders
5. **Drop Off Center Survey – Preliminary Results** (6:45 PM)
6. **Executive Session** (7:10 PM)
7. **Other Business** (7:40 PM)

Possible Action could occur on any agenda item, although not initially noted. If you need an accommodation, please call the District at 872-8100 upon receipt of this notice. All times listed are an estimated start and duration.

DRAFT
CHITTENDEN SOLID WASTE DISTRICT
19 Gregory Drive South Burlington
MEETING ROOM
MINUTES OF REGULAR MEETING
February 25, 2026

***Hybrid Meeting via Zoom.**

PRESENT

BOARD MEMBERS:	Bolton	-----
	Burlington	Lee Perry
	Charlotte	Ken Spencer
	Colchester	Lauren Eagan
	Essex	Alan Nye
		Wendy Duncan, Alt.
	Essex Junction	-----
	Huntington	-----
	Hinesburg	Rick McCraw
	Jericho	Leslie Nulty
	Milton	Betsy Paret
	Richmond	-----
	Shelburne	Margaret Wiener
	So. Burlington	Paul Stabler
		Alison Lazarz, Alt.
	St. George	-----
	Underhill	Paul Ruess
		Dan Steinbauer, Alt.
	Westford	-----
	Williston	David Howell
	Winooski	Bryn Oakleaf

STAFF: John Balparada, Director, Finance; Kayli Barber, Construction Project Manager; Joey Catania, Compliance & Safety Manager; Josh Estey, Director of Operations; Jennifer Holliday, Director of Public Policy & Communications, Amy Jewell, Director, Administration; Becky Johnston, Data & Policy Analyst; Brian Mital, Associate Director of Operations, Sarah Reeves, Executive Director

PUBLIC: Kathy Zhou, Esq., Paul Frank & Collins

AGENDA:

1. Call to Order & Agenda
 2. Public Comment Period
 3. Public Hearing – FY 27 Proposed Preliminary Budget
 4. Consent Agenda
 5. MRF-Financials
 6. MRF-Water Line
 7. Drop-Off Center Fees – Discussion Only
 8. Ordinance Change
 9. Executive Session
 10. Other Business
- Adjournment

Paul Ruess called the public hearing to order at 6 PM.

1. PUBLIC HEARING – FY 27 PROPOSED PRELIMINARY BUDGET

The budget was received by the board at their November 2025 meeting. P. Ruess requested public comment, of which there were none.

ALAN NYE made a motion, seconded by PAUL STABLER, to adjourn the public hearing. All in favor, motion passed.

Paul Ruess called the meeting to order at 6:02 PM.

1. AGENDA

No changes were made to the agenda.

2. PUBLIC COMMENT PERIOD

No members of the public were present in the meeting room, via phone or Zoom. No comments were made by the public.

3. CONSENT AGENDA

3.1 Minutes of November 19, 2025 and ~~January 28, 2026~~

3.2 Program Updates

3.3 Finance – Warrant, Cash Investment and Reserve Balances

3.4 Executive Director Update

3.5 NetSuite Renewal

Regarding the minutes of January 28, 2026, L. Nulty said that, in Item 4c, she requested information on MRF projections, not project costs. This will be verified offline and the minutes will be brought forward to the Commission at a future meeting. B. Oakleaf requested that the NetSuite Renewal be removed from the Consent Agenda. P. Ruess said that he wanted to draw the Commission's attention to the issuance of two RFPs for Facility Operations and Commodity Brokerage.

The Consent Agenda was approved as amended.

B. Oakleaf asked if CSWD is looking into leveraging any state contracts for NetSuite and asked if there were any opportunities for collaboration. She said that she did not want to delay this implementation but suggested that it be investigated for the future. J. Balparda said that he would investigate obtaining pre-negotiated rates with the state of Vermont for future software and licensing purchases. Answering a question from M. Wiener, J. Balparda said that Excel saves staff a considerable amount of time.

PAUL STABLER made a motion, seconded by LESLIE NULTY, to accept the Oracle America, Inc. annual renewal estimate for the NetSuite software as described in estimate #1777908 totaling \$50,062.80. All in favor, motion passed.

4. MRF FINANCIALS

S. Reeves said that K. Barber is on-site several times a week and is the primary contract with both construction firms. She coordinates communication and project finances. The project is on-track with the costs and staff and consultants are constantly looking for savings. As of February 16, 2026, the total expected cost to construct the new MRF is \$37.2M with some \$19M projected during the second half of FY26 through completion in mid FY27. Of that \$19M, \$12M is secured by the final tranche of bond proceeds, with the first drawdowns totaling \$3M beginning in February 2026. The remaining \$7M will

come from working capital. Operating reserves may be used to fund some of the unallocated difference, providing the Commission is amenable to reducing reserves below three months. S. Reeves said that the chance of no revenue coming in the CSWD is extremely low. S. Reeves detailed the payment structure with the contractor, noting that additional payments are expected to be made next fall. This payment is accounted for in the budgeting spreadsheet, however the location of it needs to be clarified. The descriptions in the spreadsheet will be changed to reflect actual line items.

L. Nulty suggested that staff should determine cash flow through the calendar year to determine moving averages for the project. She also suggested including the April increase to tipping fees. Answering a question from L. Nulty, S. Reeves said that CSWD has been paying interest only on the bond. CSWD will feel the full impact of interest and principal by year three. Interest payments come from the MRF operating budget. L. Nulty said that she feels uncomfortable increasing fees while there are so many unknowns. S. Reeves said that this projection is strictly for the construction project. She said that more solid numbers should be available once the RFP responses are in. Updated data for the new Average Commodity Rate (ACR)/tipping fee projections will be available at the next meeting. It is undetermined how the ACR may improve with the new MRF. Reduced contamination in recyclables and higher bale quality should positively affect revenue. The new MRF may help to allow for materials to be sold in more markets. Pricing is seasonal. Aluminum capture should increase, and new glass clean-up equipment will improve the process for generating processed glass aggregate.

5. MRF-WATER LINE

J. Estey said that the water line will be extended from the organics recycling facility on Redmond Road to the new MRF site. Twelve bids were received. Additional information was requested from the lowest six bids, and the lowest three bids are presented in the memo. Don Weston Excavating was the lowest bidder, and that is who staff are recommending. A 10% contingency is built into the requested amount. The lowest bid came in below the engineer's estimate. The water line will be on the opposite side of the street as the gas line.

ALAN NYE made a motion, seconded by PAUL STABLER, that the CSWD Board of Commissioners hereby authorizes the Executive Director to enter into a contract with Don Weston Excavating, Inc. of Williston, VT for the purposes of constructing a waterline extension on Redmond Road in an amount not to exceed \$719,645.30. All in favor, motion passed.

6. DROP-OFF CENTER FEES (DISCUSSION ONLY)

S. Reeves said that this stems from a desire to look at increasing drop-off center revenues to allow for a dedicated stream of funds for capital needs. One of the proposals being discussed is to unbundle drop-off fees and consistently charge for recycling and food scraps. A facility use of \$1/per vehicle was also discussed. J. Estey said that it is important to plan for the 7-10 year replacement cycle of compactors. The Milton drop-off center is particularly in need of repairs, and the Burlington center is potentially in need of expansion. J. Estey said that increasing the trash bag fees could also be considered. Staff have considered that charging for food scraps collection may cause users to not separate those materials. Concerns were also raised about the \$1/vehicle trip being unfair to those who need to come weekly and increasing the bag fees being unfair to trash-only users.

R. McCraw said that the composting requirement is newer and adherence to this could be seen as more fragile. A. Nye expressed concern that commercial composting providers can use the facility at the same rate as residential customers. B. Oakleaf said that she is concerned about raising the bag fees again, and that she feels that the \$1 facility fee is the best. M. Weiner said that the \$1 fee could be communicated more easily to users as being for facility improvements. K. Spencer said that a survey of users could be

conducted to better understand the impact. L. Nulty said that the facilities fee is simple and easy to explain, and that the burden is equal. B. Paret spoke about affordability concerns and said that she is concerned that this might cause users to not use the facility. B. Oakleaf said that she wanted to ensure that equity is included in the discussion, and that humans are naturally cost-adverse. L. Eagan said that the drop-off centers are often many residents' only interaction with CSWD. She feels that a survey or focus group should be implemented for the Board to learn more about how they would feel about this issue.

7. ORDINANCE CHANGE

J. Catania said that these changes include closing an identified loophole in section 3.10, an expansion of education requirements for landlords of commercial properties, and a technical change for hauler licensing. These changes are expected to go into effect on April 27.

PAUL STABLER made a motion, seconded by LESLIE NULTY, to approve Staff recommended changes to sections 3.10 & 4.8 of the Solid Waste Management Ordinance. All in favor, motion passed.

8. EXECUTIVE SESSION

Not held.

9. OTHER BUSINESS

A. Nye requested an update on glass recycling. S. Reeves noted that R. McCraw had asked for this update as well. J. Estey described collaboration with UVM regarding this issue.

Adjournment – Motion by ALAN NYE, Second by PAUL STABLER, to adjourn the meeting. All in favor, motion passed at 7:34 PM.

I agree that this is an original copy of minutes, and they have been approved by motion of the Board of Commissioners at the meeting held in _____.

Board Secretary

#3.1

DRAFT

CHITTENDEN SOLID WASTE DISTRICT
19 Gregory Drive South Burlington
MEETING ROOM
MINUTES OF SPECIAL MEETING
March 10, 2026

*Hybrid Meeting via Zoom.

PRESENT

BOARD MEMBERS:

Bolton	-----
Burlington	Lee Perry
Charlotte	Ken Spencer
Colchester	Lauren Eagan
Essex	Alan Nye
Essex Junction	Mike Sullivan
Huntington	Barb Winters
Hinesburg	-----
Jericho	Tom Joslin, Alt
Milton	Betsy Paret
Richmond	-----
Shelburne	-----
So. Burlington	Paul Stabler
	Alison Lazarz, Alt.
St. George	-----
Underhill	Paul Ruess
Westford	Katie Frederick
Williston	David Howell
Winooski	Bryn Oakleaf

STAFF: John Balparda, Director, Finance; Josh Estey, Director of Operations; Jennifer Holliday, Director of Public Policy & Communications, Amy Jewell, Director, Administration; Becky Johnston, Data & Policy Analyst; Sarah Reeves, Executive Director

Public: Chris (joined public meeting mid-meeting)

AGENDA:

1. Call to Order & Agenda
2. Public Comment Period
3. Executive Session
4. Other Business
5. Adjournment

Paul Ruess called the public hearing to order at 5:02 PM.

1. AGENDA

No changes were made to the agenda.

2. PUBLIC COMMENT PERIOD

No members of the public were present in the meeting room, via phone or Zoom. No comments were made by the public.

3. EXECUTIVE SESSION - Legal Matters

MOTION by P. Stabler, Second by A. Nye that the Board of the Chittenden Solid Waste District go into Executive Session to discuss legal proceedings, where premature general public knowledge would clearly place the District, its member municipalities, and other public bodies or persons involved at a substantial disadvantage and to permit authorized staff, and other invited interested parties to be present for this session. VOTING: All Ayes. Motion Carried.

The Board entered Executive Session at 5:04 p.m.

MOTION by A.Nye, Second by K. Frederick to exit Executive Session and reconvene the regular meeting. VOTING: All Ayes Motion Carried.

The meeting was reconvened at 6:27 p.m.

4. OTHER BUSINESS - No other Business

5. Adjournment – Motion by ALAN NYE, Second by PAUL STABLER, to adjourn the meeting. VOTING: All Ayes. Motion Carried. 6:30 p.m.

I agree that this is an original copy of minutes, and they have been approved by motion of the Board of Commissioners at the meeting held in _____.

Board Secretary

#3.2

MEMORANDUM

To: Board of Commissioners
From: CSWD Staff
Date: March 25, 2026
Re: Program Updates

- Solid Waste Management Fee and Disposal (Jon and Becky)
 - From a FY26 budget perspective, the SWMF was 1.2% below projected revenue as of February. FY26 revenue was 1.7% lower than FY25 for the same period. Please refer to accompanying charts.

- Organics Recycling Facility (Dan)
 - The compost facility is well positioned for the arrival of spring with ample inventory in all soil categories. Some early orders have come in during breaks of warmth though a full ramp up to seasonal business will likely occur at the end of the month.
 - Kim and Dan represented CSWD and the Composting Association of Vermont (CAV) at the US Compost Council annual conference in early February. Kim presented on the success of the ORF's contamination program which was well received. Dan, serving as CAV president, presented on the organization's on-farm composting work from the past four years on behalf of the executive director, who was unable to attend the conference in person.
 - Staff will be involved once again in this year's [Vermont Organics Recycling Summit](#). This year's event will be an all-day affair in Montpelier on March 25, 2006. It's an excellent opportunity to catch up on the latest and greatest in organics management in Vermont.

- Materials Recovery Facility (Josh) See below.

- Marketing, Communications & Outreach (Alise & Beth) - See attached Marketing, Communications & Outreach Update

- Legislative Update (Jen) --
March 13th marked "crossover" for the Vermont Legislature. Crossover is the deadline by which bills must pass out of their originating committee to be considered for passage into law during the remainder of the session. Because this is the second year of the biennium, bills are considered dead if they don't move out of their originating committee by the crossover date. Two bills related to solid waste made the crossover deadline:

[H.915](#) (previously 25-0091) - An act relating to establishing an extended producer responsibility program for beverage containers subject to a deposit. The bill would increase convenience for consumers to redeem beverage containers and improve transparency in the system. It does not

increase the deposit amount or expand the types of beverages subject to the deposit system. CSWD remains neutral on this bill.

[H.632](#) - An act relating to miscellaneous environmental amendments. This bill proposes changes to multiple environmental regulations including two areas related to solid waste – batteries and waste tires.

Batteries: The bill would extend by one year the deadline for conducting an assessment of end-of-life management for certain battery types and would also require the battery stewardship organization in the State to complete the assessment instead of the Agency of Natural Resources. CSWD is neutral on this change.

Waste Tires:

Prohibits the transfer of waste tires to an unlicensed solid waste hauler for disposal. Requires the Agency of Natural Resources to convene a stakeholder process on the management of waste motor vehicle tires including approaches to addressing legacy waste motor vehicle tire piles and options for recycling and reuse. The Agency would be required to report recommendations to legislative committees by January 15, 2027. CSWD is neutral on this change.

- Drop Off Center (Brian)

Drop-Off Center Trip Totals for February 2026

Essex:	5,325
S. Burlington	4,514
Williston	3,071
Milton	2,900
Hinesburg	1,676
Burlington	1,589
Total	19,075

Our Hauling Department brought a total of 31.52 ton of asphalt shingles to Roof Top Recycling (Boxborough, MA) on March 11 and 13. The shingles that our Drop-Off Centers collect are processed into asphalt pavement, road base, and other materials that go into Maine roads.

- Environmental Depot (Josh)

FY 26 2ND QTR.	ROVER	DEPOT	CEG	TOTAL
OCTOBER	0	586	45	631
NOVEMBER	0	515	36	551
DECEMBER	0	382	35	417
TOTAL	0	1483	116	1,599

- Compliance & Safety (Joey) -- Ethan is in full report mode, collecting annual reports for Commercial Materials reporting and Processors reports so that we have the data we need to create accurate and informative diversion and generation data in the Municipality. We've also had several follow-ups with major materials generators and were able to confirm new waste management programs that were not in practice prior to a notice of non-compliance from CSWD.

Safety walkthroughs were conducted at all CSWD facilities last month. No significant findings were discovered, and employees continue to operate and maintain a culture and practice of safety within all CSWD operations.

- JEDI (Amy, Devin, & Becky)- The JEDI Committee is focused on projects advancing equity, diversity and inclusion both within CSWD and for our community. This month, our Intranet staff educational efforts are focused on explaining the Muslim holiday of Ramadan; exploring intersectionality of racism and ableism; and discussing body positivity and inclusivity using current events. Within CSWD, the Committee is focused on pay equity and transparency; ensuring employees feel included in discussions of total compensation packages. We will be hosting discussions to further educate staff on processes involved in pay equity and gaining feedback to determine potential changes. Finally, this month, our external project focus is on reducing food waste from food banks, pantries, and community meals. These non-profits provide essential services to our community members most in need; the JEDI Committee is exploring options to aid them in following regulations around inedible food waste while alleviating additional burdens on the organizations, so they can continue to focus on serving their clients. In February, these organizations received a survey asking for information on what would help them best follow these regulations; possible options include more green bins for food waste; lower cost disposal; or more education to Chittenden County residents on food donation and disposal. These options are being discussed within departments at CSWD.

#3.2

CHITTENDEN SOLID WASTE DISTRICT

Tons Disposed based on Solid Waste Management Fees (Year over Year)

Month	Total Tons per Month			
	FY 25 tons	FY 26 tons	Tons Diff.	% Diff
Jul	11,693	11,607	-86	-0.7%
Aug	12,870	11,281	-1,589	-12.3%
Sep	10,759	12,675	1,917	17.8%
Oct	12,099	11,327	-772	-6.4%
Nov	10,671	9,495	-1,175	-11.0%
Dec	9,988	9,952	-36	-0.4%
Jan	8,964	9,095	130	1.5%
Feb	7,633	7,836	203	2.7%
Mar				
Apr				
May				
Jun				
Total Tons YTD	84,677	83,269	-1,408	-1.7%
Mgmt Fee \$ YTD	\$2,540,297	\$2,498,065	(\$42,232)	-1.7%

	Tons	\$
FY 26 Budget	128,236	\$5,129,440
FY 26 Actual YTD	83,269	\$2,498,065
Difference	-44,967	(\$2,631,375)
FY 26 Actual % YTD vs Budget %	64.9%	
YTD % of Months	66.7%	

Chittenden Solid Waste District

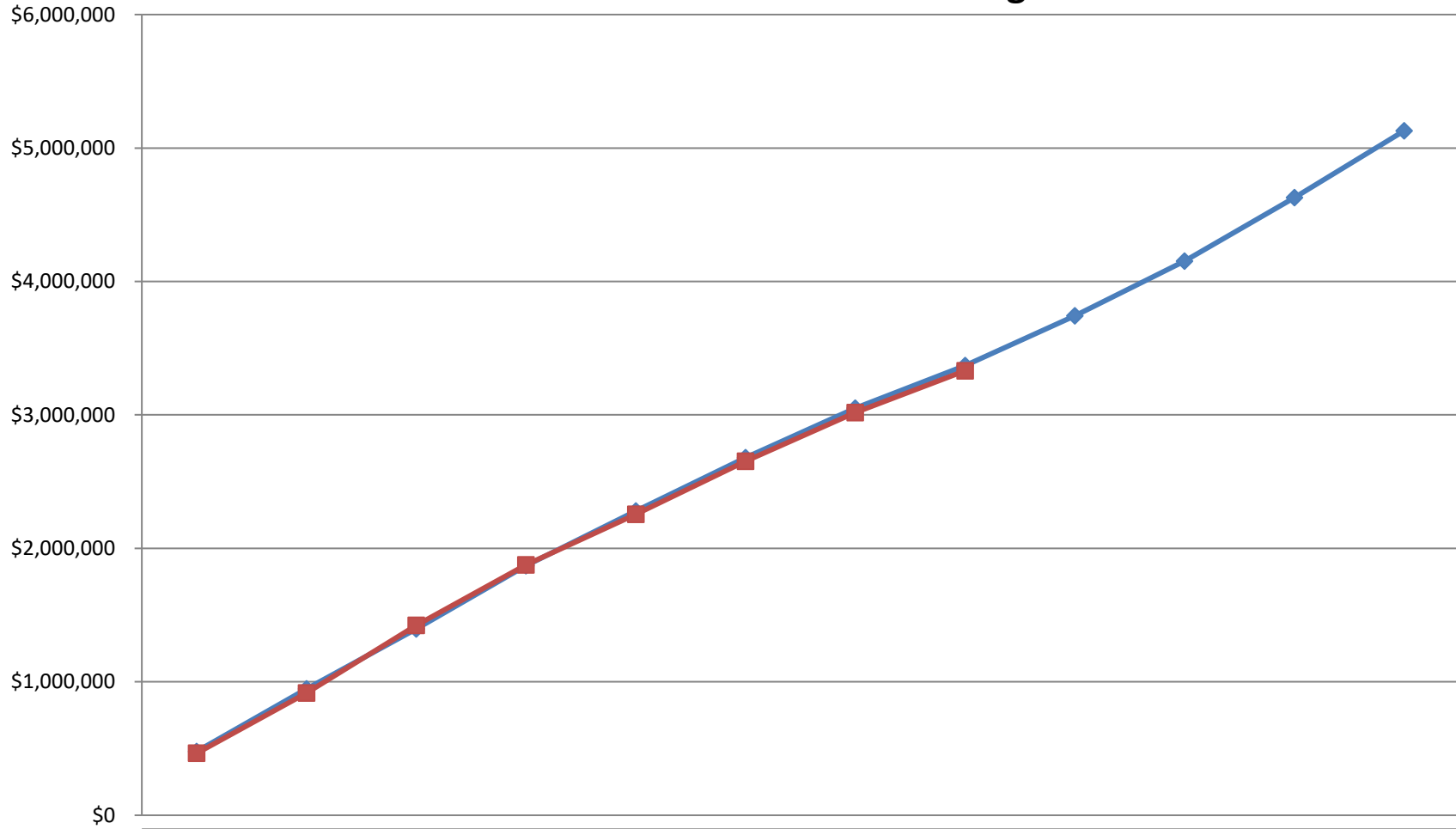
Solid Waste Management Fee FY 26 (Budget versus Actual)

Time	Tons	\$/Ton	\$
FY 26 Budget	128,236	\$40.00	\$5,129,440

\$	Budget \$			Actual		Difference		% of YTD Budget
	Percent	\$ per month	\$ YTD	\$ per month	\$ YTD	\$ per month	\$ YTD	
Jul-24	9.3%	\$478,338	\$478,338	\$464,297	\$464,297	(\$14,041)	-\$14,041	97.1%
Aug-24	9.1%	\$469,157	\$947,495	\$451,240	\$915,538	(\$17,916)	-\$31,957	96.6%
Sep-24	8.8%	\$449,197	\$1,396,692	\$507,018	\$1,422,555	\$57,820	\$25,863	101.9%
Oct-24	9.2%	\$473,468	\$1,870,160	\$453,097	\$1,875,652	(\$20,371)	\$5,492	100.3%
Nov-24	8.0%	\$410,211	\$2,280,371	\$379,817	\$2,255,470	(\$30,394)	-\$24,902	98.9%
Dec-24	7.8%	\$398,932	\$2,679,303	\$398,075	\$2,653,545	(\$857)	-\$25,758	99.0%
Jan-25	7.2%	\$370,392	\$3,049,696	\$363,782	\$3,017,327	(\$6,611)	-\$32,369	98.9%
Feb-25	6.3%	\$320,644	\$3,370,340	\$313,426	\$3,330,753	(\$7,218)	-\$39,587	98.8%
Mar-25	7.3%	\$373,004	\$3,743,344					
Apr-25	8.0%	\$408,679	\$4,152,023					
May-25	9.3%	\$476,656	\$4,628,679					
Jun-25	9.8%	\$500,761	\$5,129,440					

TONS	Budget Tons			Actual		Difference	
	Percent	Monthly Tons	Tons YTD	Tons per month	Tons YTD	Tons per month	Tons YTD
Jul-24	9.3%	11,958	11,958	11,607	11,607	(351)	(351)
Aug-24	18.5%	11,729	23,687	11,281	22,888	(448)	(799)
Sep-24	27.2%	11,230	34,917	12,675	35,564	1,446	647
Oct-24	36.5%	11,837	46,754	11,327	46,891	(509)	137
Nov-24	44.5%	10,255	57,009	9,495	56,387	(760)	(623)
Dec-24	52.2%	9,973	66,983	9,952	66,339	(21)	(644)
Jan-25	59.5%	9,260	76,242	9,095	75,433	(165)	(809)
Feb-25	65.7%	8,016	84,259	7,836	83,269	(180)	(990)
Mar-25	73.0%	9,325	93,584				
Apr-25	80.9%	10,217	103,801				
May-25	90.2%	11,916	115,717				
Jun-25	100.0%	12,519	128,236				

CSWD - Solid Waste Management Fee Revenues Year-To-Date - FY 25 Actual v. FY 26 Budget



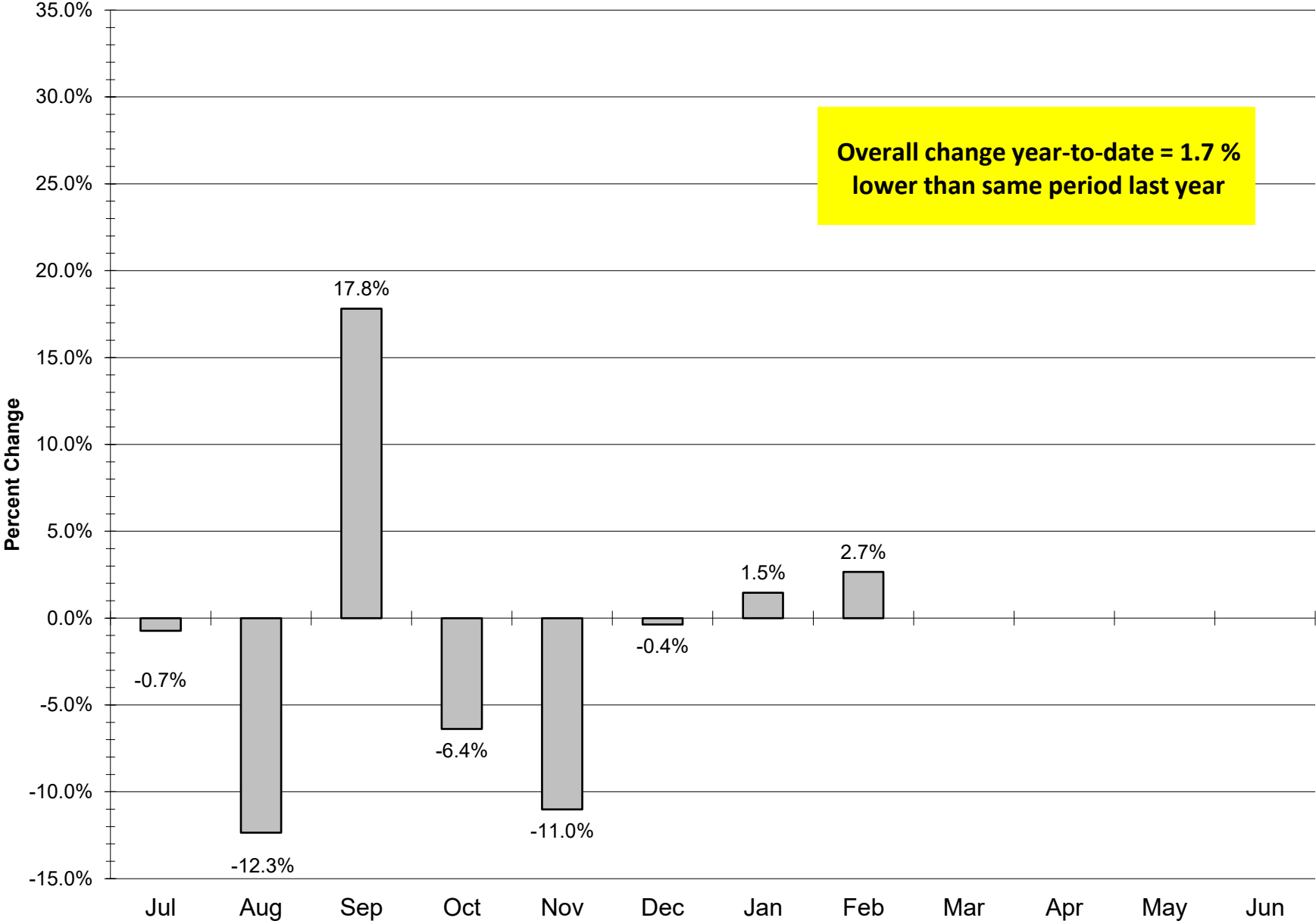
	Jul-24	Aug-24	Sep-24	Oct-24	Nov-24	Dec-24	Jan-25	Feb-25	Mar-25	Apr-25	May-25	Jun-25
◆ Budget	\$478,338	\$947,495	\$1,396,692	\$1,870,160	\$2,280,371	\$2,679,303	\$3,049,696	\$3,370,340	\$3,743,344	\$4,152,023	\$4,628,679	\$5,129,440
■ Actual	\$464,297	\$915,538	\$1,422,555	\$1,875,652	\$2,255,470	\$2,653,545	\$3,017,327	\$3,330,753				

CHITTENDEN SOLID WASTE DISTRICT

SWMF Tons Refuse Disposed per Operating Weekday

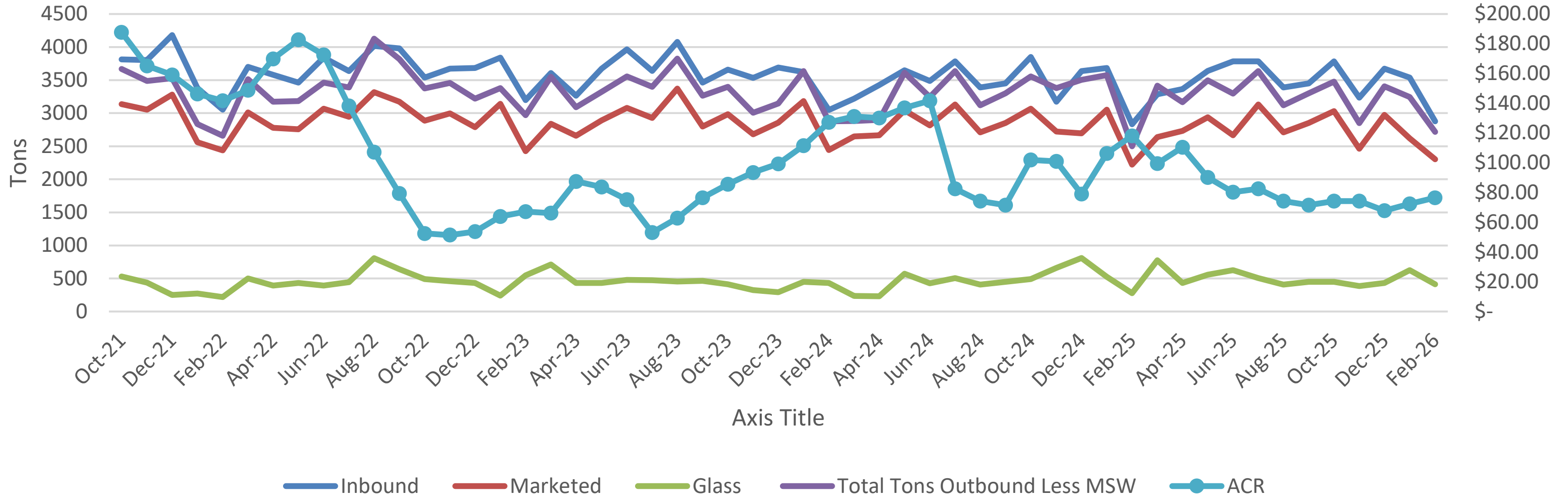
Month	FY 25			FY 26			Difference FY 26 vs FY 25			
	Monthly Tons	# Operating Weekdays	Avg Tons/Day	Monthly Tons	# Operating Weekdays	Avg Tons/Day	Monthly Tons	# Operating Weekdays	Tons/Day Tons	Tons/Day %
Jul	11,693	22	531.5	11,607	22	527.6	-86	0	-3.9	-0.7%
Aug	12,870	22	585.0	11,281	21	537.2	-1,589	-1	-47.8	-8.2%
Sep	10,759	20	537.9	12,675	21	603.6	1,917	1	65.7	12.2%
Oct	12,099	23	526.1	11,327	23	492.5	-772	0	-33.6	-6.4%
Nov	10,671	20	533.5	9,495	19	499.8	-1,175	-1	-33.8	-6.3%
Dec	9,988	21	475.6	9,952	22	452.4	-36	1	-23.3	-4.9%
Jan	8,964	22	407.5	9,095	21	433.1	130	-1	25.6	6.3%
Feb	7,633	20	381.6	7,836	20	391.8	203	0	10.1	2.7%
Mar		21			22			1	0.0	
Apr		22			22			0	0.0	
May		21			21			0	0.0	
Jun		21			22			1	0.0	
Total	84,677	255		83,269	256		-1,408	1		
Average			332.1			325.3			-6.8	-2.0%

Difference in SWMF Tons Per Month Disposed FY26 versus FY25

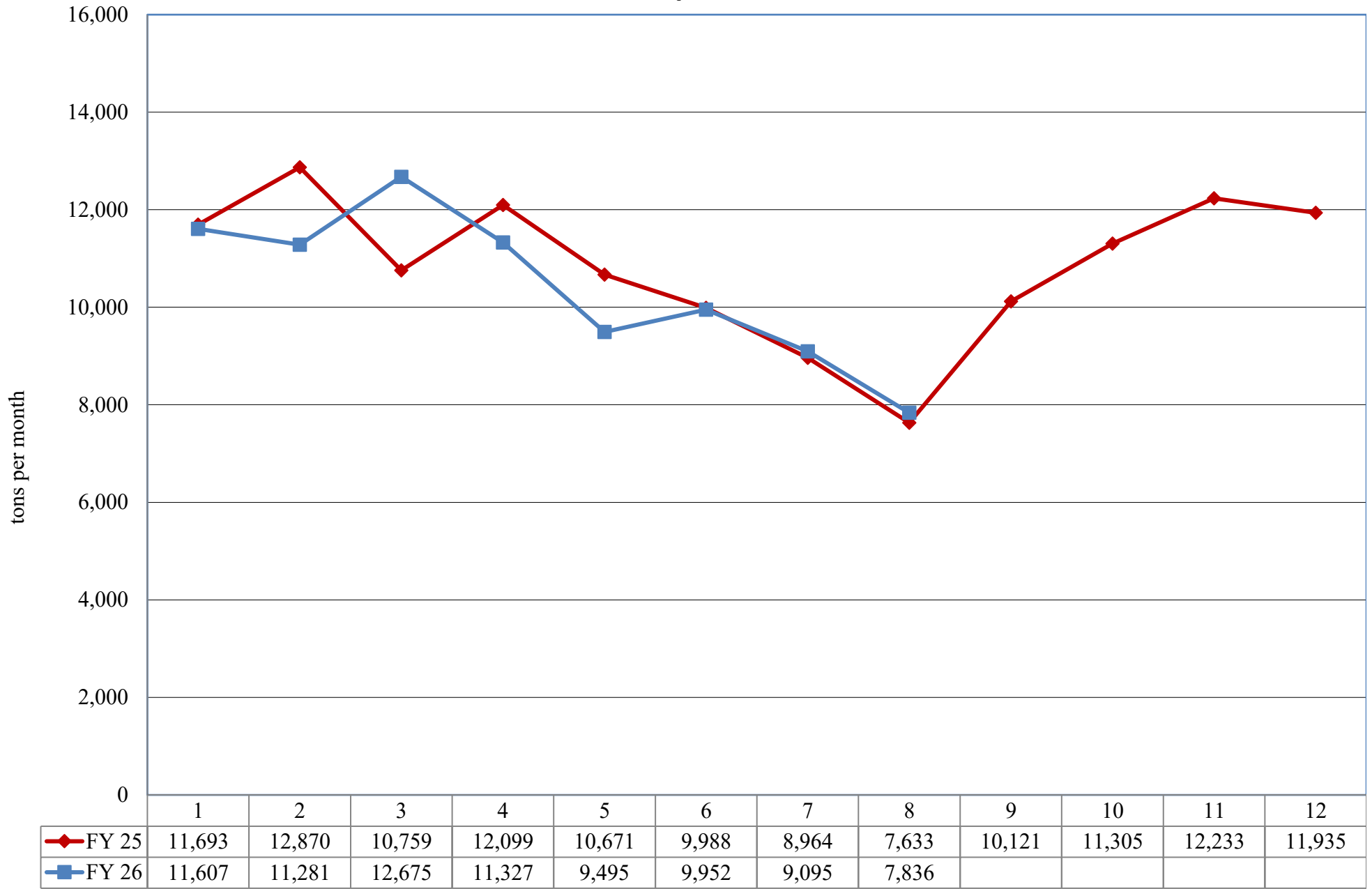


#3.2

MRF Material Flow



CSWD - SWMF Tons Trash per Month - FY 26 v. FY 25



#3.2

Marketing, Communications & Outreach Update

February 2026



Marketing Updates

Our Food Scraps Campaign Is About to Launch!

Next week, we're kicking off a new **Food Scraps awareness campaign** aimed at helping people understand the connection between food scraps and carbon pollution.

The idea for the campaign came straight from what we learned in last month's **Food Scraps Quiz**—many respondents were surprised to learn how much landfilled food contributes to climate impacts. So, we're turning that insight into action with a campaign designed to reach residents across Chittenden County.

Here's where you'll see it:

- *Seven Days* print ads
- VT Digger website ads
- Facebook / Meta ads
- Front Porch Forum posts
- A postcard mailed to households across Chittenden County

All ads will direct people to our **“Let's Scrap Food Waste”** webpage, which is being refreshed ahead of the launch.

The campaign will run for **two months**, and we'll share results and insights once it wraps up.

Stay tuned—you may start seeing it out in the wild soon!

one slice of pizza thrown in the trash creates roughly **the same carbon pollution as driving a gas-powered car** for 2.5 miles*

one avocado thrown in the trash creates roughly **the same carbon pollution as running a gas-powered lawn mower** for 15 minutes*

KNOW MORE. WASTE LESS.

CSWD
Chittenden Solid Waste District

OVER 70,000 TONS OF FOOD SCRAPS end up in Vermont's only landfill each year, creating dangerous methane gas when they decompose improperly. That's a significant amount of carbon pollution that each Chittenden County resident can help keep out of our environment by diverting food scraps properly!

*Food emissions estimates sourced from the My Sustainable Food Carbon Footprint Calculator. Values are approximate (2024).

Marketing Updates, cont.

Drop-Off Center Facebook Quiz Is Live!

Our **DOC Quiz** is now running on Facebook/Meta for the next **two weeks**. We're hoping to see the same great participation we had with the Food Scraps Quiz!

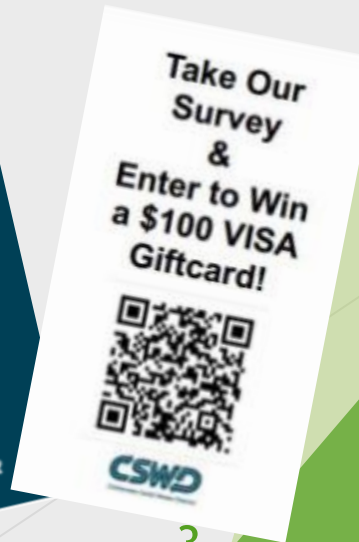
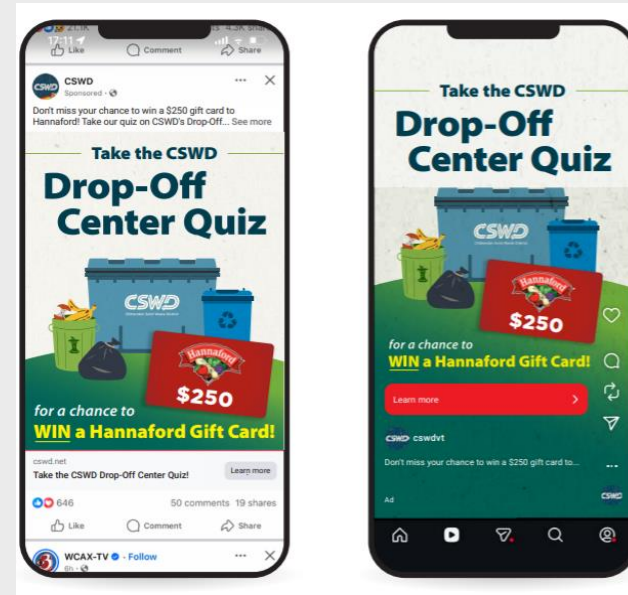
The results will help shape our **DOC marketing campaign** later this spring and provide helpful insights for Operations.

DOC Customers Survey

Starting Friday (3/6), a brief survey will be available at all DOC locations to gather customer feedback on fees being considered to raise revenue for capital improvements.

The survey will run for **three weeks**.

Note: CSWD employees are not eligible for the gift card drawings.

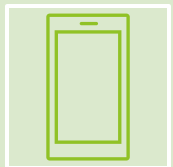


Web Stats

(February 1 - 28, 2026)



12,000 active users on the website! Average time on site 43s.



The A-Z list received 3,208 views with the most searched item being MATTRESS and COUCH taking second!



Outreach's blog "The Most Wasted Foods in America" had 180 views in its first week of being posted!

OH NO!
NOT ANOTHER TOP TEN...



TOP TEN A-Z Items:

1. Mattress or Box Spring
2. Couch
3. Clothing & Textiles
4. Microwave
5. Tire
6. Battery (household)
7. Cell Phone
8. TV
9. Fluorescent Bulbs (CFLs)
10. Food Scraps

CSWD in the News

CSWD was featured in the press multiple times for stories highlighting the upcoming Battery Bonanza, recently approved Ordinance changes, and a grant award from the Agency of Natural Resources.

- ▶ **Recycling Today:**
<https://www.recyclingtoday.com/news/vermont-expands-battery-recycling-program/>
- ▶ **PR Newswire (AP):**
<https://www.prnewswire.com/news-releases/vermont-expands-battery-recycling-program-to-include-most-single-use-and-rechargeable-batteries-302691286.html>
- ▶ **Vermont Business Magazine:**
<https://vermontbiz.com/news/2026/february/26/cswd-board-approves-updates-solid-waste-management-ordinance>
- ▶ **WFFF /Yahoo News:**
https://www.yahoo.com/news/articles/cswd-apartment-landlords-must-compost-015220752.html?guccounter=1&guce_referrer=aHR0cHM6Ly93d3cuYmluZy5jb20v&guce_referrer_sig=AQAAAGqD0jw6SqLr6ky1NgnlMS1g7nnhk3urvMD5yZfqFyibdaDsKaIYz8YGXB7OD2e6l4u4ZtR8gYtzFfzUPgaOfTdSDM6WUnkYyLLFyJ8iQkm1R-safnw2uJ83FxCE4ClM50_tsGWkCktGPEQKZDsdvOPbfMBQXkcQ8YQkFmNszMSx
- ▶ **Vermont Business Magazine:**
<https://vermontbiz.com/news/2026/february/27/cswd-awarded-111323-grant-vermont-dec>

CSWD is with The North End Food Pantry.

Posted by Sprout Social

Feb 10 · 🌐

...ct: CSWD offers grant funding to help businesses
organizations turn waste reduction goals into real
n ♻️

...ently, our Waste Reduction Grant supported the North
Food Pantry with a digital bench scale to track food
clothing donations, plus new display racks and stora
s to better organize and share items with the
community.

...nce November, they've received more than 👕 3,000
pounds of donated clothing and nearly 🥕 13,000 poun
f food — keeping usable resources in circulation and
helping neighbors at the same time.

We love seeing sustainability in action. Keep up the
amazing work, North End Food Pantry!



Social Media: Facebook

- ▶ Total Followers: 2,150
- ▶ Content Views: 236,263*
- ▶ Top Performing Post: North End Food Pantry grant recipient
- ▶ Views: 1,272
- ▶ Interactions: 22
- ▶ *NOTE* - content views are up almost 3,000% due to paid DOC Meta Quiz and boosted post for Hazardous Waste position.

FREQUENTLY ASKED
QUESTIONS SERIES

How do I dispose of plastic bags and film?



[View insights](#)

[Boost](#)

11 7

Liked by oakleafforwinooski and others

cswdvt Plastic bags and film don't belong in your blue recycling! So, how should you dispose of them? Bring them to your local grocery store and look for a designated.

February 6

Social Media: Instagram


- ▶ Followers: 906
- ▶ Monthly Views: 59,980*
- ▶ Interactions: 111
- ▶ Top Performing Post: Plastic Bags and Film
- ▶ Views: 475
- ▶ Interactions: 19
- ▶ Insights: CSWD's Instagram followers are most active Mondays 3-9pm and Tuesdays 6-9pm.

▶*NOTE* - The Meta Quiz and boosted post contributed to the spike in page views this month.

Chittenden Solid Waste District

251 followers

1w • 

ring! 

Looking for a motivated team member to work at our busy

e–Sat | 7:45am–3:45pm

Public-facing, customer service focused

Active, outdoor work (POS training provided)

Passion for waste reduction encouraged

\$21.52/hr + excellent benefits

Apply today and help keep materials out of the landfill: [csw](#)

WE'RE

Social Media: LinkedIn

Followers: 251

Impressions: 422

Top Post: We're Hiring:
Drop-Off Center
Operator

ished

7D Updates

East Quadrant – No. 5333 • Feb 24, 2026

Parent • Community Engagement and Outreach Manager, C
Waste District Board, Chittenden County

ed to: Downtown, East End, Old North End, New North End (show

Announcement

Now Hiring! 🎉

SWD is looking for a motivated team player to join our Haza
Program! Help run our innovative paint recycling program and
hazardous waste at the Environmental Depot & Rover.

📅 Tues–Sat, 7:30–3:30

💰 \$25–\$27/hour + excellent benefits

👉 Hands-on, public-facing work in a dynamic environment

Sound like you? Apply and make a difference: <https://cswd.org/cswd/cswd-employees/>

Winter Webinar Series: The Dirt on Compost- What Rea
Organics Recycling Facility

Ever wonder what happens to your food scraps? ♻️

Social Media: Front
Porch Forum
(Two posts per month)

Job Openings

Winter
Webinar Series

Outreach Activities: Communities & Event Management

Workshops/Presentation: 3

February Digest: 46% open rate

Blog Post: <https://cswd.net/cswd-digest/the-most-wasted-foods-in-american-homes-and-how-to-save-them/>

Most Wasted in American (And How to em)

... items that are wasted the most, and ways that you can
through better storage, food donation, a little creativity in the
ing as a last resort.



Outreach Activities: Schools

- ▶ Waste Audit: Partnership with Burlington High School and School Compost & Recycling Action Plan Institute (SCRAPI). Preliminary data shows improvement from previous audit.
- ▶ Battery Bonanza: Partnership with The Battery Network (formerly Call2Recycle)



Outreach Activities: Business

- ▶ Business Check-Ins: 15
- ▶ Northeast Organic Farming Association (NOFA) tabling event

CSWD Main Line Phone Coverage

CSWD Outreach, Communications and Administrative teams share responsibility for answering the main office phone during regular office hours. Call data - including topic and referral source - is tracked to help inform communications planning and website improvements.

February Stats

- ▶ Outreach Staff: 36 hours coverage
- ▶ Calls logged by Outreach and Admin Team: 53hours
[View the Tracker](#)
 - ▶ Average number of calls per day: 7
 - ▶ Popular Call Topics:
 - ▶ A-Z list: 39
 - ▶ Other: 30
 - ▶ Depot Appt: 12
 - ▶ Call forward: 6
 - ▶ Found CSWD Phone Number:
 - ▶ Google: 60
 - ▶ Website: 28
 - ▶ Other: 17

Marketing, Communications and Outreach Team

- Jen Holliday - Director of Communications and Public Policy
- Alise Certa - Marketing Manager
- Beth Parent - Communications and Outreach Manager
- Rhonda Mace - School Outreach Coordinator
- Kat Moody - Community Outreach Coordinator
- Gabby Stevens - Business Outreach Coordinator



To: Board of Commissioners
 From: John Balparda, Director of Finance
 Date: March 17, 2026
 RE: **January 2026** Fund Balances, Reserves, & Warrants

FUND & RESERVE BALANCES

Calculation of Total Reserves		
	Fund Balances	Allocated Cash
Cash Reserves		
32103 - Solid Waste Management Fund	\$ 866,001	\$ 866,001
32105 - Operating Fund	\$ 2,246,005	\$ 2,246,005
32106 - Capital Fund	\$ -	\$ -
32107 - MRF Project Capital Fund	\$ 3,494,233	\$ 3,494,233
32201 - Facilities Closure Fund	\$ 1,506,983	\$ 1,506,983
32202 - COMMUNITY CLEAN UP FUND	\$ 94,059	\$ 94,059
33001 - Landfill Post Closure Fund	\$ 960,933	\$ 960,933
33002 - Biosolids Fund	\$ 423,755	\$ 423,755
34100 - Debt Service Fund	\$ 481,340	\$ 481,340
	\$ 10,073,308	\$ 10,073,308
Total CASH & CASH EQUIVALENT		\$ 10,375,372
Excess Cash Reserves		\$ 302,063
Working Capital		
Total - 11001 - ACCOUNTS RECEIVABLE		\$ 1,475,980
Less:		
Total - 20100 - ACCOUNTS PAYABLE		\$ 1,898,789
Less: MRF Invoices Included in A/P		\$ (1,517,218)
Total - 20200 - CREDIT CARD PAYABLE		\$ 4,081
Total - 20400 - ACCRUED TAXES		\$ 951
Total - 20600 - ACCRUED EXPENSES		\$ 6,181
Total - 20670 - UNEARNED REVENUE		\$ 1,786
Subtotal		\$ 394,570
Working Capital		\$ 1,081,410
Total Reserves		\$ 1,383,473
<u>KPI - 3 Months of Operating Cash & Reserves on Hand</u>		
32103 - Solid Waste Management Fund		\$ 866,001
32105 - Operating Fund		\$ 2,246,005
Total Reserves		\$ 1,383,473
Total Operating Cash & Reserves		\$ 4,495,478
Quarterly Average Cash Burn		\$ 1,257,135
Months of Operating Cash & Reserves		3.6
Prior Month - Months of Operating Cash & Reserves		
DEC 25		3.5
NOV 25		3.5
OCT 25		3.4



ADMINISTRATIVE OFFICE
19 Gregory Drive, Suite 204
South Burlington, VT 05403

EMAIL info@cswd.net
TEL (802) 872-8100

www.cswd.net

Accounts Receivable Aging Summary						
Aging Category	Current	30 Days O/S	60 Days O/S	90 Days O/S	>90 Days O/S	Total
Subtotal	\$1,469,569	\$2,107	\$990	\$1,184	\$2,129	\$1,475,980
% of Total	99.6%	0.1%	0.1%	0.1%	0.1%	100.0%
<i>KPI - Total A/R Outstanding for less than 60 days = 90%</i>						
% A/R O/S <60 Days		99.71%				
Dec	\$1,962,521	\$7,497	\$15,560	\$4,071	(\$477)	\$1,989,172
% of Total	98.7%	0.4%	0.8%	0.2%	0.0%	100.0%
Nov	\$1,823,661	\$52,195	\$10,014	\$2,457	(\$1,296)	\$1,887,031
% of Total	96.6%	2.8%	0.5%	0.1%	-0.1%	100.0%
Oct	\$1,393,659	\$632,387	\$155,430	(\$2,115)	\$1,474	2,180,835
% of Total	63.9%	29.0%	7.1%	-0.1%	0.1%	100.0%

AVERAGE MONTHLY CASH BURN	
Warrant Date	Warrant Amount
11/12/2025	714,919
MRF Exps	(66,114)
Subtotal	648,805
12/2/2025	793,843
12/9/2025	1,117,828
12/22/2025	314,750
MRF Exps	(656,869)
Subtotal	1,569,551
1/6/2026	793,038
1/20/2026	795,899
MRF Exps	(35,886)
Subtotal	1,553,050
Total	3,771,406
Monthly Avg	1,257,135

DEFINITIONS

Funds – a claim on resources (or equity), primarily cash

Reserves – excess cash plus positive working capital, or less negative working capital

Excess Cash – the amount by which cash on hand exceeds the total fund balances

Working Capital – current assets (readily converted to cash) less current liabilities

Fund Type – classification of the fund; Designated and Restricted types are relevant for CSWD

- Designated funds are “ear marked” by management for a stated purpose
- Designated category is further classified by internal or external purpose
 - Designated for Internal Purposes – greater flexibility around usage
 - Solid Waste Management Fund
 - Operating Fund
 - MRF Project Capital Fund
 - Capital Fund
 - Designated for External Purposes – while not Restricted have more constraints around usage
 - Facilities Closure Fund – total estimated costs to close each facility operated by CSWD; reported to the State annually
 - Community Clean-up Fund
- Restricted funds are amounts that can be spent only for the specific purposes stipulated by regulation, agreement, or external resource providers
- Restricted category is further classified by timing
 - Restricted – no definitive time frame – Landfill Post Closure Fund
 - Temporarily Restricted – has definite timeframe – Debt Service Fund

FUNDS WATERFALL

As each priority fund reaches its carry amount, any remaining revenue flows (“waterfalls”) to the next priority fund in order, as listed below:

Funds Subject to Funding Priority Waterfall		
Fund Type	Fund Name	Carry Value
Designated for Internal Purposes	Solids Waste Management Fund	3 months of budgeted administrative expenses
Designated for Internal Purposes	Operating Fund	3 months of budgeted operating expenses
Designated for Internal Purposes	MRF Project Capital Fund	No set minimum, intended to close the projected MRF project shortfall (currently \$4.2M)
Designated for Internal Purposes	Capital Fund	100% the Next year's Capital Expense Budget
Undesignated	Undesignated Fund	Any revenue above and beyond waterfall requirements

These funds are NOT subject to the waterfall. They are evaluated annually and are set by a specified calculation.

Funds Using a Set Calculation		
Fund Type	Fund Name	Carry Value
Designated for External Purposes	Facilities Closure Reserve	Calculated cost of facility solid waste termination
Designated for External Purposes	Community Clean Up Fund	Current balance due to communities
Restricted	Biosolids Fund	Total of funds received plus interest
Restricted	Landfill Post Closure Fund	Estimated worst case cost to achieve functional stability
Temporarily Restricted	Debt Service Fund	100% of upcoming year's debt service



Chittenden Solid Waste District

#3.4

ADMINISTRATIVE OFFICE

19 Gregory Drive, Suite 200
South Burlington, VT 05403

EMAIL info@cswd.net

TEL (802) 872-8100

www.cswd.net

TO: Board of Commissioners
FROM: Sarah Reeves
DATE: March 19, 2026
RE: Executive Director Update

February 19- PRESENT

- **PERSONNEL**

- Jen Holliday, Director of Public Policy and Communications, has announced her retirement from CSWD, effective June 30, 2026. Jen is the longest-serving employee of the District, having served for 35 years. Her contributions to CSWD, solid waste management in Vermont, and Extended Producer Responsibility policy across the U.S. are unmatched. The depth and breadth of her knowledge and experience are invaluable, and all Vermonters owe Jen a debt of gratitude for her successful efforts to bring comprehensive recycling statewide and pushing household hazardous waste management to the level of professionalism from which we all benefit. She has been a critical advisor to me, and I will personally miss having her in the next-door office. Jen's retirement is well deserved, and I know we all wish her all the best in her next adventures. I'm sure she'll be giving her passport a workout! Congratulations, Jen, and thank you!

- **NEW MATERIALS RECYCLING FACILITY PROJECT:**

- We received two responses to our MRF Operations Services RFP. Staff are evaluating the responses and have scheduled interviews with each respondent. The commodity brokerage RFP responses are due back March 26. The intent is to recommend contract awards not later than the June Board meeting.

- **COMMISSIONER EMAILS**

- A reminder to Commissioners to use your CSWD email for all correspondence regarding the District. It's important that we capture all business-related correspondence for public record retention purposes, and that correspondence be routed through our network.

- **CITY OF BURLINGTON RECYCLING**

- The City of Burlington city council awarded a citywide residential recycling collection contract to Casella Waste Systems. Casella was the sole bidder on the contract. This will replace current city-provided recycling collection services. All recyclables collected under the contract are required to be brought to the CSWD MRF for processing.

- **QUESTIONS RECEIVED FROM COMMISSIONERS**

- None received during this period unrelated to the MRF fraud incident.

April 2026

- April 7: Finance Committee meeting, 5:30PM
- April 8-12: Sarah PTO
- April 13: Executive Board meeting, 5:00PM
- April 22: Full Board meeting, 6:00PM



#4

ADMINISTRATIVE OFFICE

19 Gregory Drive, Suite 204
South Burlington, VT 05403

EMAIL info@cswd.net

TEL (802) 872-8100

www.cswd.net

MEMORANDUM

TO: CSWD Board of Commissioners
FROM: Sarah Reeves, Executive Director
Josh Estey, Director of Operations
DATE: March 19, 2026
RE: Prime Contract Potential Change Order #008, Materials Recycling Facility Project

SYNOPSIS

Prime Contract Change Order #008 from ReArch as part of the new MRF project is being submitted to capture additional costs their HVAC sub, Thomas Mechanical, identified in drawing revisions issued by the Architect as part of the build process.

CURRENT SITUATION

The mechanical portion of the bid was originally included as an allowance based on 20"x20" duct size. Subsequent conversations between CSWD, ReArch, Thomas Mechanical, Dubois & King, and the State Fire Marshall resulted in a duct size increase to 24" x 24" and included additional runs. Value engineering options include duct changes from rectangular to spiral where allowed and a reduction in overhead taken by ReArch from 15% to 10%. This change order eliminates most HVAC contingencies, but the final request retains enough of a contingency to accommodate any off-cuts and additions that may occur in the field.

REQUEST

Staff are requesting that the Board approve the change order as it is above the Executive Director's authority to spend. The change order amount will be incorporated into the next application for payment, i.e. invoice, from ReArch.

Be it resolved that the CSWD Board of Commissioners hereby approves the District's Executive Director to execute PCO #008 with ReArch Construction Company in the amount of \$485,586.20 for HVAC construction costs.

###



#4

MEMORANDUM

TO: CSWD Board of Commissioners
FROM: Sarah Reeves, Executive Director
Josh Estey, Director of Operations
DATE: March 19, 2026
RE: Prime Contract Potential Change Order #011, Materials Recycling Facility Project

SYNOPSIS

Prime Contract Change Order #011 received from ReArch as part of the new MRF project captures additional costs due to unforeseen below grade conditions in the baler pit requiring the contractor to over-excavate and install crushed stone fill.

CURRENT SITUATION

Site work subcontractor SD Ireland conducted excavation of the baler pit area to install structural foundation. While excavating to the required elevation a thick layer of clay was discovered. CSWD's third-party testing firm, Vermont Testing, recommended over excavation of an additional two feet of structural stone and filter fabric to ensure proper load distribution, drainage and capillary break under the foundation. SD Ireland excavated an additional 325 cubic yards of clay material past the required depth and replaced with 1350 linear ft of filter fabric and two feet of ¾" crushed stone for the entire area of the baler pit (4386 sf).

REQUEST

Staff are requesting that the Board approve the change order as it is above the Executive Director's authority to spend. The change order amount will be incorporated into the next application for payment, i.e. invoice, from ReArch.

Be it resolved that the CSWD Board of Commissioners hereby approves the District's Executive Director to execute PCO #011 in the amount of \$76,127.70 for purposes of reimbursing ReArch/SD Ireland for additional costs due to unforeseen below grade conditions.

###



Chittenden Solid Waste District

ADMINISTRATIVE OFFICE

19 Gregory Drive, Suite 204
South Burlington, VT 05403

EMAIL info@cswd.net

TEL (802) 872-8100

www.cswd.net

#5

To: Board of Commissioners
From: Jen Holliday
Date: 3/19/2026
RE: Surveys

At the March Board meeting, staff will share the details of two surveys.

CSWD contracted with the University of Vermont Center for Rural Studies to create a survey that helps us understand why residents choose curbside collection rather than use our Drop-off centers for their trash disposal. The survey report is attached.

At the Board's request, staff developed the second survey to learn from our DOC customers their preferred pricing approach for CSWD to raise revenue for capital expenses. This survey will be completed on March 21.

###



2026 CSWD Drop-Off Centers Study

The Center for Rural Studies at UVM

Contents

Please select your age group.	2
What town do you live in as your primary residence?	3
Are you aware that there are local drop-off centers (sometimes referred to as the dump), where residents can bring their trash, recycling, food scraps and other materials for recycling and disposal located in Chittenden County?	3
Please select the option that describes how your household most often disposes of regular household trash.....	3
My household does something else (please describe).....	4
Which drop-off center does your household take regular household trash to most often?.....	4
What is the main reason your household brings trash to a drop off center instead of using curbside service or some other disposal option?	5
What are the top three reasons your household does not bring your regular household trash to a drop-off center?	6
What are the top three reasons your household does not bring your regular household trash to a drop-off center? Another reason.....	6
If you were able to save \$10 per month by bringing trash to a drop off center, would that cause your household to stop using curbside pick-up?	7
If you were able to save \$20 per month by bringing trash to a drop off center, would that cause your household to stop using curbside pick-up?	7
If you were able to save \$30 per month by bringing trash to a drop off center, would that cause your household to stop using curbside pick-up?	7
If you were able to save \$40 per month by bringing trash to a drop off center, would that cause your household to stop using curbside pick-up?	7
*How much would you want to save by using drop off centers?.....	8
Why would no amount of savings cause your household to stop curbside and bring trash to the drop-off center?	9
What is your preferred way to receive information about trash, recycling and composting?.....	10
What is your preferred way to receive information about trash, recycling and composting?.....	10
Some other way	10
Select the option that best describes your current living arrangement.	10
How many people, including yourself, live in your household?	10
Does your household rent or own?.....	10
What is the gender of the person who makes decisions about how your household deals with its trash?	11
Select the option representing your total household income in 2025.	11
If there is some other relevant feedback or comment you would like to provide, please do so here.	11

Methodology

The CSWD Drop-Off Centers survey was conducted in February of 2026. A total of 6,818 email addresses received the survey invitation and up to two follow-up reminders. Of these, 418 respondents were eligible and took the survey. Potential respondents who were under 18 years of age, or who did not live in Chittenden County, or who refused to answer those qualifying questions were not eligible to participate.

With a total population of about 142,411 18+ residents (2024 U.S. Census ACS Estimate) in Chittenden County- the results of this study are generalizable to that population with a confidence level of 95% and margin of error of 4.8%. This means that if the survey were conducted 100 times, 95 of those times the results would fall within +/- 4.8 percentage points of the results reported in this effort.

Results

Please select your age group.	Frequency	Percent
18 to 24 years	2	0.5
25 to 34 years	10	2.3
35 to 44 years	54	12.5
45 to 54 years	69	15.9
55 to 64 years	82	18.9
65 to 74 years	120	27.7
75 to 84 years	75	17.3
85 years and over	17	3.9
18+	4	0.9
Total	433	100.0

What town do you live in as your primary residence?	Frequency	Percent
Bolton	1	0.2
Buel's Gore	1	0.2
Burlington	71	17.0
Charlotte	6	1.4
Colchester	49	11.7
Essex	64	15.3
Hinesburg	12	2.9
Huntington	4	1.0
Jericho	15	3.6
Milton	34	8.1
Richmond	17	4.1
Shelburne	18	4.3
South Burlington	59	14.1
Underhill	12	2.9
Westford	8	1.9
Williston	35	8.4
Winooski	9	2.2
Chittenden County	3	0.7
Total	418	100.0

Are you aware that there are local drop-off centers (sometimes referred to as the dump), where residents can bring their trash, recycling, food scraps and other materials for recycling and disposal located in Chittenden County?	Frequency	Percent
Yes	396	96.6
No	14	3.4
Total	410	100.0

Please select the option that describes how your household most often disposes of regular household trash.	Frequency	Percent
My household takes trash out for curbside collection every week.	131	32.0
My household takes trash out for curbside collection every other week.	87	21.3
My household takes trash to a drop-off center.	125	30.6
My household takes trash to a dumpster or bin provided by a landlord or condo association.	56	13.7
My household does something else (please describe)	10	2.4
Total	409	100.0

My household does something else (please describe)
We recycle food scraps in an association bin
The trash is picked up by Casella
Takes to our business
take it to the curbside about once a month
My household takes trash out for curbside collection every 4 weeks
Curbside once a month
curbside 3 to 4 weeks
Curbside / 1 or 2 X's month (on call)
also use my recycle bin and garden in the summer
Own a business & use our bin

Which drop-off center does your household take regular household trash to most often?	Frequency	Percent
Burlington	9	7.4
Essex	36	29.8
Hinesburg	5	4.1
Milton	13	10.7
Richmond	10	8.3
South Burlington	33	27.3
Williston	14	11.6
Another drop-off location (Myers)	1	0.8
Total	121	100.0

What is the main reason your household brings trash to a drop off center instead of using curbside service or some other disposal option?

- **95 respondents** mentioned the affordability of going to the drop off center versus paying for curbside.
 - Many of these respondents mentioned that they do not generate enough trash to justify weekly or bi-weekly pickup costs.
- **24 respondents** mentioned that they do not generate enough trash for weekly or bi-weekly pickup.
 - *“We don't like the bins sitting at the curbside and don't need that kind of service every week.”*
- **20 respondents** mentioned the convenience of going to the drop off center in some way or another.
- **8 respondents** mentioned challenges or dissatisfaction with putting out bins or with curbside hauler services as reasons why they go to the drop off center.
- **7 respondents** specifically mentioned being able to drop off multiple types of waste (and some that a curbside hauler would not take) all at one place.
 - *“A variety of materials that can be disposed of properly. Being able to bring odd sized trash, textiles, batteries , motor oil, yard waste, scrap metal, etc.”*
- **6 respondents** said they don't mind, or like going themselves as a social activity, or just to get out of the house.
 - *“I like going to CSWD!”*
- **4 respondents** said they like the control of doing it themselves.
 - *“A family activity, taking ownership/inventory of our waste: recycle ratio.”*
- Additionally- these **two comments** were independent of the common themes described above.
 - *“Compost. It's only free to bring compost if you also bring trash - horrible policy that discourages composting! But we're committed to composting and don't want to drive all the way to Williston.”*
 - *“CSWD has helpful employees at the drop off.”*

What are the top three reasons your household does not bring your regular household trash to a drop-off center?	Frequency	Percent
Curbside collection is more convenient	181	41.0
Don't want to put trash in my vehicle	83	18.8
Don't have the time to go to drop-off	66	14.9
Drop-off hours are not convenient	28	6.3
My household doesn't have a way to bring trash to the drop-off	16	3.6
Drop-off locations are too far away	15	3.4
Drop-off centers cost too much	15	3.4
Already included in rent, association costs	14	3.2
Don't know where drop-off centers are located	6	1.4
Didn't know drop-off centers existed	0	0.0
Another reason (describe)	18	4.1
Total	442	100.0

What are the top three reasons your household does not bring your regular household trash to a drop-off center? Another reason
Casella runs ours
Don't need to most often
don't want the smell of it during summer months
Energy usage having everyone travel to dump, do not have a trash truck to transport
Handicapped
I don't know how to "package" trash for drop off and cost structure.
I utilize Curb which is a local trash pick up service that promotes economical savings and less landfill waste
If it is cheaper I'd consider it despite being less convenient but I never thought it was an option
limited mobility
Mobility problems of old age
My age
Need a larger bin to store
Physically easier for an elder
Price of gas in VT is too expensive; cheaper in NYS!!
Saves us money by using family member curbside
The trash is picked up by Casella
The trash that can't be picked up by curbside I do not have a vehicle large enough to transport.
We've never compared the cost of drop off, and curbside is convenient

If you were able to save \$10 per month by bringing trash to a drop off center, would that cause your household to stop using curbside pick-up?	Frequency	Percent
Yes	31	15.7
No	177	89.4
Total	198	100.0

If you were able to save \$20 per month by bringing trash to a drop off center, would that cause your household to stop using curbside pick-up?	Frequency	Percent
Yes	26	15.3
No	144	84.7
Total	170	100.0

If you were able to save \$30 per month by bringing trash to a drop off center, would that cause your household to stop using curbside pick-up?	Frequency	Percent
Yes	35	25.2
No	104	74.8
Total	139	100.0

If you were able to save \$40 per month by bringing trash to a drop off center, would that cause your household to stop using curbside pick-up?	Frequency	Percent
Yes	14	14.3
No. How much would you want to save by using drop off centers?*	37	37.8
No amount of savings would cause me to use the drop off centers	47	48.0
Total	98	100.0

*How much would you want to save by using drop off centers?	Frequency
200	1
500	1
\$60+	1
100	4
50	9
60	4
60-100	1
75	1
Free	1
If curbside was over \$200 we would use drop off center	1
if the city provided containers and figured out a way for carless people to drop off trash, to make it accessible, I would consider it.	1
It is the convenience of home pick up.	1
We are elderly. We do take compost items to the drop off center each week and yard waste as needed, and used appliances and computers	1
Why is it everyone works so hard to minimize vehicle energy usage but folks insist on increasing it to have people transport there own trash?	1
\$40 is a maybe. Probably still no though. \$60 a month savings would require consideration. We have a 2 yr old and my wife is pregnant. Time is the limiting factor.	1
\$40.00 would give me pause. It is physically a problem for me to move trash in large barrels to the drop off center. We have compost picked up weekly for the same reason.	1

Why would no amount of savings cause your household to stop curbside and bring trash to the drop-off center?
Curbside pick-up is inexpensive, its not area of my life I need to save money. Time is far more precious.
Because I live with roommates and it would be too hard to coordinate. We enjoy the convenience.
Because it's super convenient to have curb size pick up
Busy family, three kids, lots of coming and going. Any errand I can take off my to do list is worth paying for.
Convenience (X5)
Convenience. We don't produce that much trash/recycling and I don't always have a vehicle to get to the drop-off center.
Curbside trash pick-up is more convenient. It's also more economical -- imagine the gasoline wasted by everyone dropping off trash, which would also overwhelm the drop-off centers.
Have never used a drop off center for regular trash disposal. Only use it for extra items. Not in the habit.
Hours they are open are near impossible with my job
Husband and I work 40hrs each and have children. What little time we have is constantly booked anyways. We cannot add a chore that has us saving and gathering waste to haul it somewhere, likely caught in a line of others doing the same.
I am 93 years old and no condition to go to the drop-off centers
I don't have/own a vehicle. I have no way of bringing the trash to a drop off center.
I don't want trash in my vehicle
I don't want to deal with stinky garbage in my car and finding time to do it every week when I can just roll my bins to the top of the driveway
I don't want to put the trash in my car.
I don't want trash in my vehicle
I like having a schedule that I don't need to think about or plan for. Also, pick up prevents trash and recycling build up (assuming I would procrastinate on occasion or consistently)
I would waste more resources (gas, time, ...) than having the trash picked up by a truck once a week. We live about as far as you can from the drop off centers.
It's inconvenient, my car would smell from spills, and the hours for the drop off are not consistent.
lack of transportation
Less convenient plus mobility issues
Like the ease of curbside drop off
Limited mobility Already have so many household tasks
no time to take trash to dump
Not able to drive at my age.
Putting trash in my car and driving to the dump on my day off and then waiting in line is not worth it. We also have recycling pickup, so that would be another drop off.
The drop off centers are about 20 minutes away from my house. With two small children and a full time job I would prefer to pay someone to come get my trash and save my time for other things.
The problem isn't always the money - it's finding time to get to the center and hauling compost in the car.
Time. Work, kids, play. Convenience. I use the drop offs a lot. Not adding MSW to what I use to bring
Too difficult
Transportation of trash would be a problem
We do take large items to the drop off centers. I find them to be intimidating and busy.

What is your preferred way to receive information about trash, recycling and composting?	Frequency	Percent
CSWD website	42	12.1
Front Porch Forum	53	15.2
A flyer or mailer in my mailbox	52	14.9
CSWD email/newsletter	115	33.0
At a drop-off center	8	2.3
From my trash/recycling hauler	17	4.9
Text messages on my phone	27	7.8
On social media	13	3.7
Newspaper	2	0.6
Radio	3	0.9
Television	6	1.7
Email	7	2.0
Some other way (please describe)	3	0.9
Total	348	100.0

What is your preferred way to receive information about trash, recycling and composting? Some other way	Frequency
handouts are good	1
My condo management team	1
Through my HOA	1

Demographics

Select the option that best describes your current living arrangement.	Frequency	Percent
I live alone	57	16.5
I live with family/relatives	277	80.1
I live with people that are not family/relatives	12	3.5
Total	346	100.0

How many people, including yourself, live in your household?

Mean-2.7 Range 1-6

Does your household rent or own?	Frequency	Percent
Rent	9	2.7
Own	328	97.3
Total	343	100.0

What is the gender of the person who makes decisions about how your household deals with its trash?	Frequency	Percent
A person identifying as female	147	48.5
A person identifying as male	154	50.8
A person identifying as gender fluid or non-binary	2	0.7
Total	303	100.0

Select the option representing your total household income in 2025.	Frequency	Percent
Less than \$25,000	5	1.8
\$25,000 to \$50,000	29	10.3
\$50,000 to \$100,000	96	34.2
\$100,000 to \$200,000	116	41.3
\$200,000 or more	35	12.5
Total	281	100.0

If there is some other relevant feedback or comment you would like to provide, please do so here.
It strikes me as funny that you chose "refuse" as your answer for not wanting to answer the question as it is also another word for garbage although pronounced differently.
A drop off center in Shelburne would be much more convenient for many of us.
A few barriers to going to the dump with trash - it would take me approximately 40-1 hour time each time to go to the dump plus additional wait time at the dump as well as the challenge of the smell in your car and food/fluid/waste leaking out of bags into your car....it would need to be significant savings to incentivize using the dump for what curbside currently provides.
Both adults share decision making for how we deal with trash.
Bring back Rover to Jericho or have more dates in nearby area
Ditch the nonexistent genders from your demographic questions. They're absurd.
Drop off center personnel are kind and helpful. Always a joy to go there!
Excellent job But I would love to recycle Plastic my bags !!!!!!!
Find that Disposing bulk trash may have different prices with who ever is at the entry
Food composting is very hard for us at our age. We have done it for many years before it was mandatory, but age and infirmity are making it extremely difficult.
food waste drop-off needs to be free at the transfer stations. Charging a dollar does not incentivize people to separate and bring in their waste to compost. Just my opinion.
Great folks work at the Essex dump!!
I actually look forward to going to the "dump". The people who work there are more than accommodating and friendly. I enjoy seeing them and running into friends and neighbors.
I also find out info on FPF and Observer. I wish the town of Williston and other communities had one company/public works to pick up garbage. It drives me crazy to see so many trucks from different companies drive the same roads using so much fossil fuels. There has to be a better way!
I am a female and want that option without the rest of the garbage! That should be an option, not just the

currently popular suggestions!
I am satisfied with cswd
I answered "Refuse" to the option for bringing garbage rather than curbside because there wasn't an option for "Would need more info to consider".
I appreciate how friendly the staff at the Essex drop-off center is!
I appreciate the opportunities offered by CSWD to recycle, and leave household trash. That's the short version....
I bring food scraps, textiles, and other non trash items to drop off centers
I do bring our kitch compost to the So Burlington CSWD drop off on a regular basis - usually 3 times a month
I do take metal recycling to the drop off center 3-4 times a year
I guess because I grew up with curbside pickup I expect my trash to be collected curbside. Maybe that is part of the reason it would take a lot for me to use the dropoff center regularly.
I hate to see a truck come into our community and pick up in 1 or 2 houses per block. I think a computer could divide up all the houses and assign one truck to pick up each house! The trucks would still have the same number of stops, but be way more efficient!
I know you would like to have more of the trash flow through CSWD but given many of us have to work two jobs just to make ends meet. We just don't have the time to collect it. Put it in our car take it to the drop off center, and if the drop-off center is only open two or three days a week during the day when we're all at work we are never gonna give up the convenience of at home collection
I like going to the Essex CSWD; the staff is always polite to me and helps me when necessary.
I like the fact collects food waste first compose
I like the yearly(?) hard-paper flyer that shows/states WHAT IS and WHAT IS NOT recyclable (although I am also trying to limit the amount of plastic purchased).
I live in a park community and am paying for curbside pickup with my monthly fee.
I own a mobile home in a trailer park
I really appreciate all you all do! I am always wishing you the best and am so thankful for your dedication to community and the environment. Thank you!!!!
I really like to go to Drop-Off center. Staff is friendly and polite, other customers are friendly as well. It is cheaper than having a collection company do it.
I very much appreciate our CSWD drop off site and the people who work there. Drop off for yard waste is a fantastic resource.
I watched the webinar on textile recycling. It was very interesting!
I wish more Vermonters would compost and I wish more of the country would at least recycle
I wish the drop-off/pick-up space was still open. It was the best!!!
I would have to save a very large amount of money to give up the convenience of curbside pick up. More than \$40 a month
If you didn't charge to drop off trash, we'd use you
if you're looking to mitigate curb collection, please make sure we maintain accessibility for our community members - including those that may be disabled or without a car.
Im a senior living alone. I live on 1,200.00 from Social Security per month. It's very difficult to get the trash to a drop off center and extremely difficult to afford the cost. I wish there were other options for low income seniors. Thank you. Diane Kaiser.
In the past we brought our trash to the drop-off. We can now afford the convenience of curbside pick up, and plan to keep that service. We do bring other materials to drop-off locations (batteries, metal, fabric) and to ReSource (reusable goods).
Increased drop-off would require multiple booths to process lines quicker, especially during busy hours.

Also, extended hours would allow more evening drop-off to reduce the weekend rush.
Is there a sturdy receptacle to cart trash to the dump? Please advise.
It May never happen but I wish CSWD had optional pick-up for items other than trash as I would definitely pay for that
It would be helpful to understand why you want people to drop-off their trash instead of use curbside pick-up? I don't understand the benefits of that. Wouldn't we be using more gas if each individual household drove to the dump instead of a collection point? It seems like the same argument as public transit to me.
Just want to clarify that our "trash" is once a month, but we do curbside recycling every 2 weeks and we bring our compost about 3 to 4 weeks to the center
Keep DEI question out of surveys; they serve no purpose. Bring back your reuse sheds, they are a great way to keep stuff out of land fill, very convenient to do it at the same time as trash drop off. I realize it takes effort to manage but isn't it in the best interest of CSWD to reduce landfills?
Kudos to the staff at the Essex station. Now and prior.
Lobby to reduce packaging . Get rid of single use grocery bags was a start, way to much packaging. Way too much non recyclable plastic in the world.
Love the staff at Williston dump
Maybe get hold of associations and have them give a discount on association dues if we bring trash to drop off centers
more info/help on battery/electronics disposal
My home is part of a homeowner's association so we don't make individual decisions about trash and recycling removal.
My husband not only identifies as a male ,he is male.
Neither one of us own a vehicle, so we can't go to the drop off centers.
Not enough real re-cycling done ! CWD should be thinking about reducing size of material, ie : Mulching machine (From Portland Or.) to the reduce material down muching shred size.
Our trash service is covered by HOA fees, so not sure saving @@ while dropping off trash is an option for me. But if the HOA would reduce my monthly fees, I'd do it in a heartbeat. But that cost just keeps going up. SIGH
physical limitations, aging and/or transportation issues need to be considered
Recycling is a big portion of our weekly "trash" pickup. Bringing 2 bags of trash to the drop off center is very different that bringing 2 bags of trash and 2-4 bins of recycling every week.
Smaller trash containers, we have more recycling now and it only gets picked up every 2 weeks
So appreciate all you do to help folks take better care of our earth
So curious why you asked about the gender of the decision maker
Staff at Milton CSWD are great! Very helpful!
Thank you
Thank you for everyone you provide for services. We appreciate it.
Thanks for all you do!
The essex drop off center is great, the staff is always upbeat and happy to be there, and recognize regulars. It was always fun to go there with my kids, but my current living situation includes trash removal.
The gate guard once decided to inspect my recyclables and I felt he was out of line and added things weren't there. He think he looking for extra money he could pocket
The people at the Hinesburg Drop-off site are always friendly and helpful. That in itself is reason to go there. I wouldn't otherwise.
The personnel are very helpful and nice

The Pine St drop-off is very convenient.
The staff at the Essex location are friendly and helpful. It makes an unpleasant chore more pleasant.
There really should be curbside pickup in the city. It would lead to cleaner recycled material.
They do a good job in Milton thanks
Think in terms of total environmental impact, people getting hurt, impact of increased traffic and people's time availability
Todd at the Essex transfer station is the best!!!
Up to four year ago I was taking my trash to the transfer station but my age caught up with me.
We appreciate the courtesy and helpfulness of CSWD employees. They are great!
We try to reduce and reuse so don't produce much trash. Cook from scratch etc
We enjoy not having to drag the dumpsters to the curb and have no trouble getting to the recycling center when needed.
We have taken the tour of the recycle center twice and found it interesting and informative. We would encourage people to take this tour.
We live in an association and pickup is part of our monthly dues.
We love recycling that benefits the community and earth.
we take all compost to drop off center. We recycle everything else that is not trash.
We use ~66 gallon bins for both trash and recycle. I'd like a rate quote based on these sized container for drop-off to designated drop off locations. This would allow me to see if it is worth the reduced cost, extra time, gas and milage to go with dropping off our waste versus a weekly pickup.
We use curbside pickup for weekly trash pickup and for weekly compost pickup. It is difficult for me to physically bring both to a dropoff center, and we do not want them in our car. I do bring materials such as construction materials, furniture, batteries and computers to the CWSD facility on Landfill Rd several times per year, and the staff are wonderful. My wife and I also periodically stop at the Resource Center on Pine St to browse there too, and enjoy having that facility in Burlington. I am about to bring paint to the other CWSD on Airport Drive. I would certainly support and pay for City pick-up of garbage and compost on a weekly basis at our home.
We're fortunate to have the services of the CSWD in this area. Keep up the good work. Thank you.
when are you going to start getting aggressive with RECYCLING ALL RECYCLABLE materials as opposed to a select few?
Who wants to make a special trip to a dump with trash in the summer or in bad weather? We have lived here 13 years and I have no idea where the dumps are - but they must be at least 25 minutes away.
Why do we have three or more companies picking up trash in our neighborhood? It would seem the only one is needed.
Yes, the paint and chemicals program absolutely sucks. I have to make an appointment 30 days in advance and deal with their crappy hours. There should be drop offs at all the collection centers at least once a week. Otherwise, people will continue to toss this out with the regular trash, dump them on the side of the road or deposit them in gas station garbage cans. One would think Vermont of all places would be a leader in this area.
you operate your dropoff centers well!
you should explain what you are hoping to accomplish by this survey. Maybe you did and I missed it. The question asking the identifying characteristics of the trash-decision-maker is an odd one -- are you trying to think about how next you could appeal to a particular gender? And the \$10, \$20, \$30, \$40 ... those seem like conversations I might have had when I was 10 years old. Really.
Your trash management decisions most often favor the SWD employee rather than the user