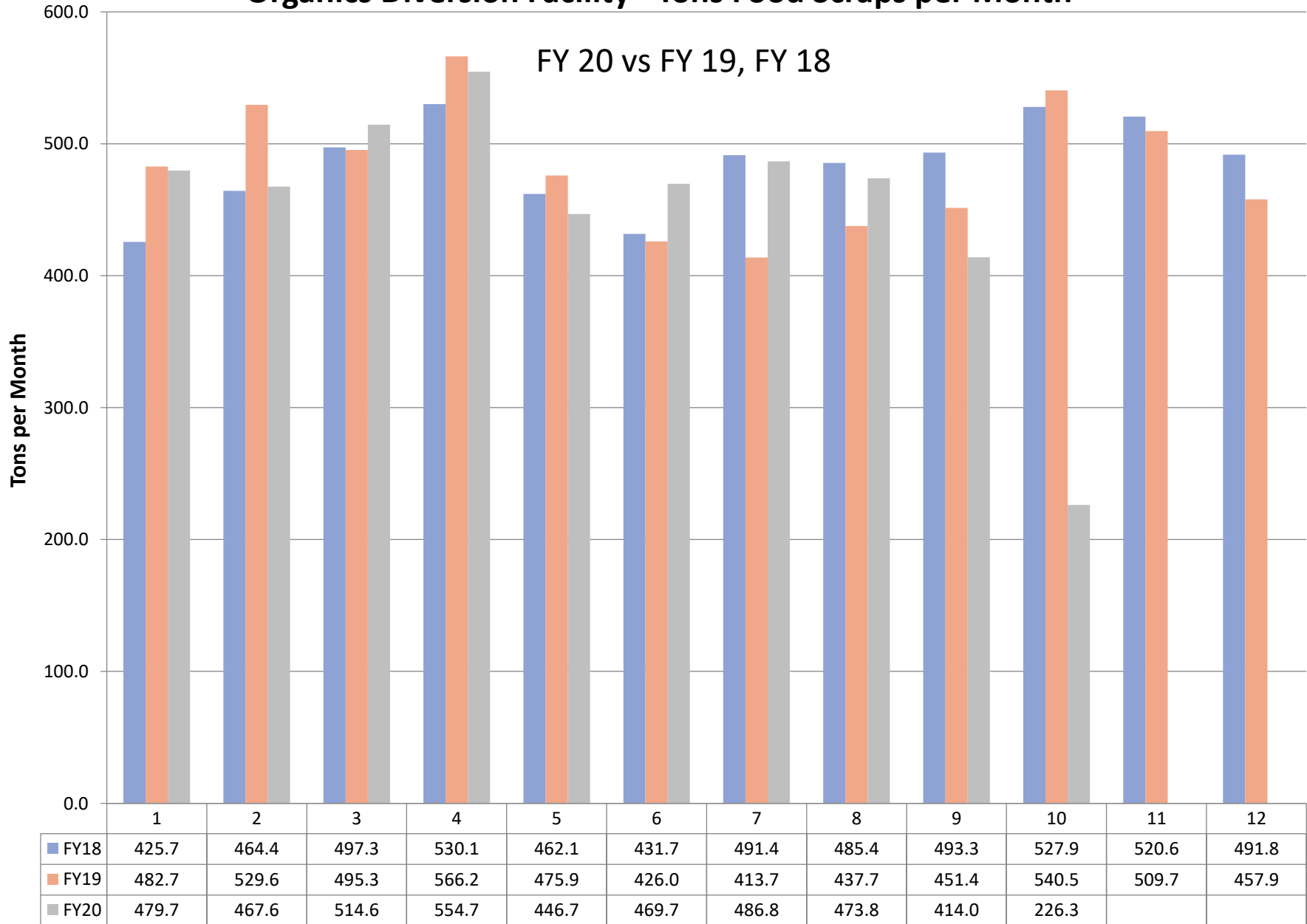


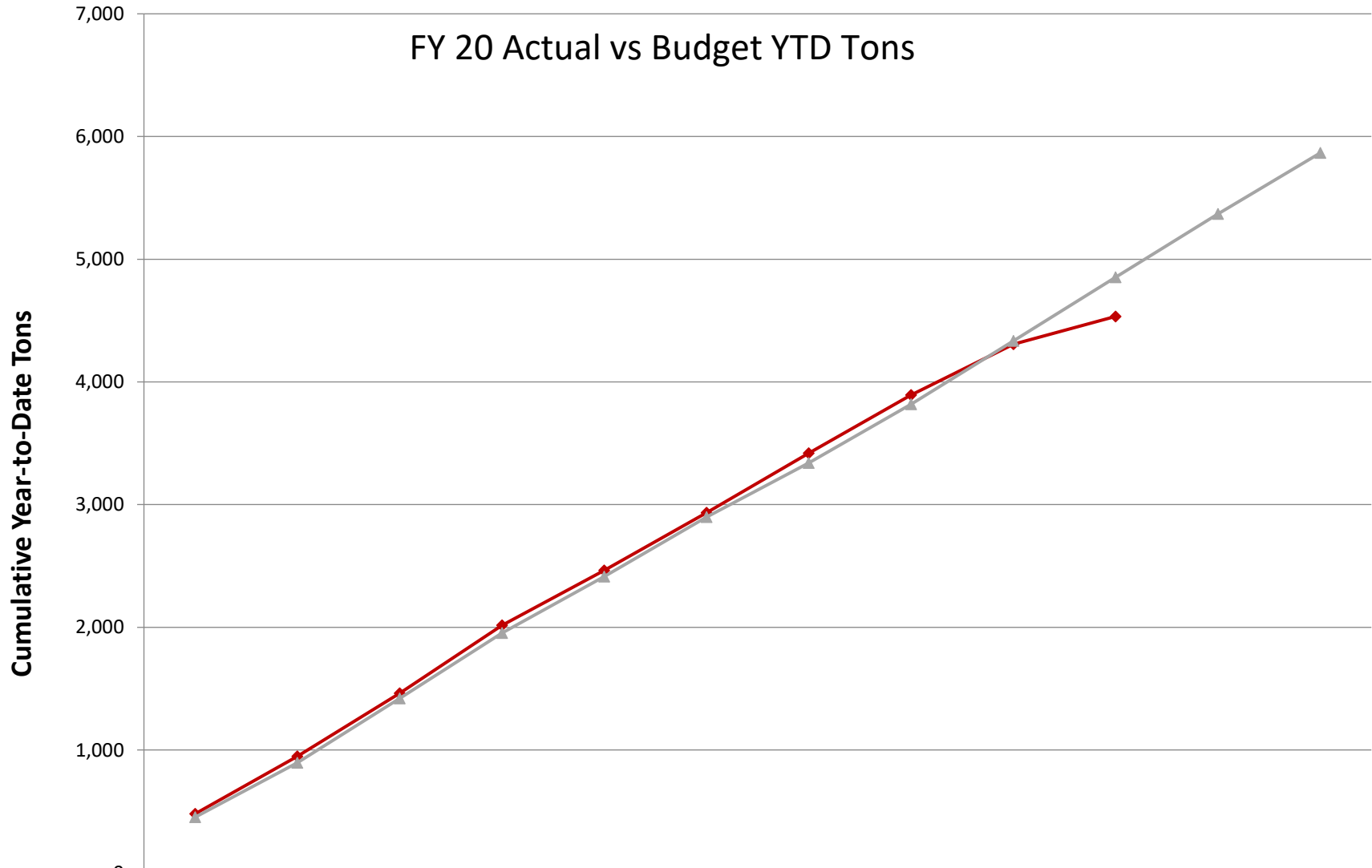
Organics Diversion Facility - Tons Food Scraps per Month

FY 20 vs FY 19, FY 18



Organics Diversion Facility - Incoming Food Scraps

FY 20 Actual vs Budget YTD Tons



	Jul	Aug	Sep	Oct	Nov	Dec	Jan	Feb	Mar	Apr	May	Jun
◆ FY 20 Actual	480	947	1,462	2,017	2,463	2,933	3,420	3,894	4,308	4,534		
▲ FY 20 Budget	452	897	1,420	1,953	2,414	2,898	3,339	3,819	4,335	4,854	5,370	5,866