



Recycling Rally

Champlain Elementary 2023



What did we do?

Champlain Elementary Recycle Rally Timeline



March 9th

Recycle
Rhonda Visit



**March 13th –
April 14th**

The Recycle
Rally: Bin
Surveys!



March 14th

Trash on the
Lawn Day



March 21–31

Waste Reduction
Classroom
Intervention Projects



April 6th and 7th

Green Mountain
Compost and
MRF Field Trip

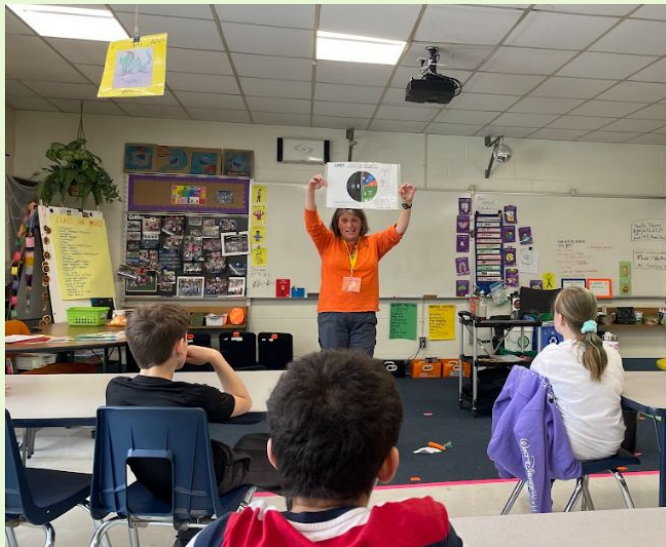


April 3rd–15th

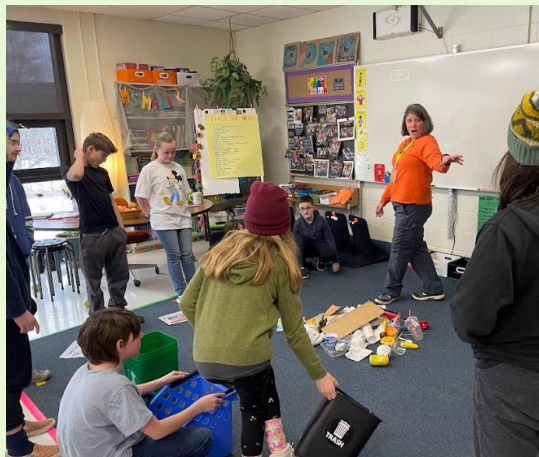
Data Analysis
and Reflection

Recycle Rhonda Visits!

On March 9th Recycle Rhonda came to visit the whole 5th grade to teach us about the 3 R's and the importance of waste reduction!



Looking at past data from CES
Trash on the Lawn Day



Learning the proper way to sort our waste!



We are now waste reduction experts!

Trash on the Lawn Day

Champlain Elementary participated in a Trash on the Lawn Day on March 14th. The 5th grade classes sorted waste and collected data with Ethan from CSWD. Other classrooms stopped by to view the process in action! This was our first intervention that aimed to raise awareness of the waste we are creating at our school.



Trash on the Lawn Day Data



	Mass (lbs)	Percent by mass
Total Trash Collected (lbs)	63	100
True Trash	36	57
Recyclables	5.2	8
Food Scraps	19.9	32
Uneaten/Unopen Foods	0.5	1
Reusables	0.1	0.16
Liquids	1.3	2
0	0	0
	0	0

	Mass (lbs)	Percent by mass
Total Recyclables Collected (lbs)	33.8	100
True Trash	1	3
Recyclables	32.8	97
Food Scraps	0	0
Uneaten/Unopen Foods	0	0
Reusables	0	0
Water bottles	0	0
Liquids	0	0

	Mass (lbs)	Percent by mass
Total Food Scraps Collected (lbs)	55.6	100
True Trash	0	0
Recyclables	0	0
Food Scraps	55.6	100
Uneaten/Unopen Foods	0	0
Reusables	0	0
0	0	0
Liquids	0	0



Data Collection: Bin Surveys!

The 5th Grade collected data for 4 weeks from every classroom at Champlain Elementary as well as the adult spaces. We used this data to create interventions that educated our community with the aim of reducing our waste.



Learning how to do a bin survey by looking at our waste.



Waste Collection for bin surveys!

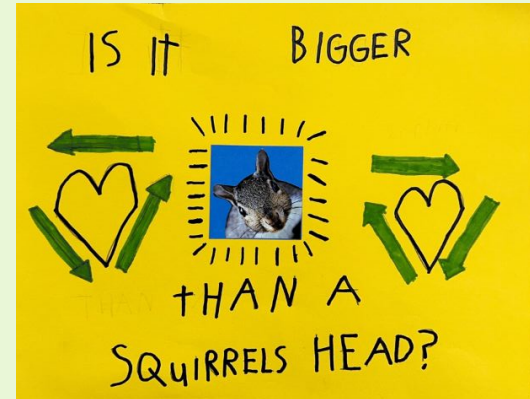
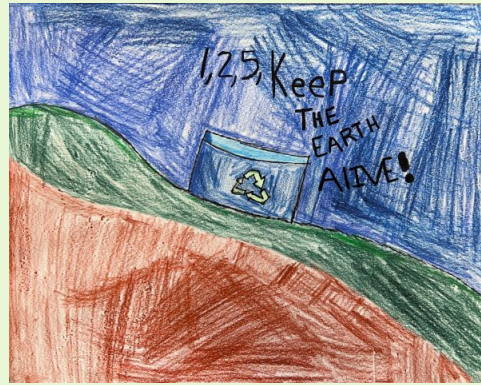


Data Collection from bin surveys



Waste Reduction Intervention Projects

We used the data from our bin surveys to design waste reduction intervention projects. These included announcements, posters, presentations, systems changes and more!



This group focused on educating other classes how to "Put your waste in the right place".

Waste Reduction Intervention Projects



This group focused on getting paper towels into compost. They created signage and gave a presentation and demonstration to two classes where they noticed this was a problem.

Waste Reduction Intervention Projects



This group created signage based on data, gave a presentation and then monitored snack time.



1,2,5 Keep the Earth Alive

Recycle

What goes in the Recycling?

Cardboard

Cans

Paper

Make sure everything you put in the recycling is bigger than a Squirrel's head.

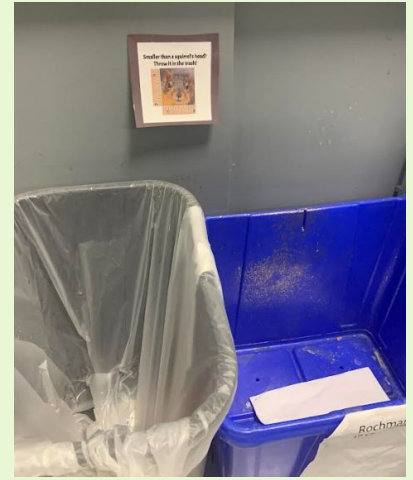
What goes in the compost?

Food Scraps
Paper towels

Things that go in the trash

Empty chip bags and bar wrappers go in the trash and 3.6.7 type plastic goes in the trash

Waste Reduction Intervention Projects



Signage Galore!



Waste Reduction Intervention Projects



**Even more
signage!**



Waste Reduction Intervention Projects

Where do the paper towels go?

Paper towels do NOT go in the trash or recycling! Paper towels go in the compost!



Is it smaller than a Squirrel's head?

If something is smaller than a Squirrel's head than it goes in the trash. A Squirrel's head is two inches. A sticky note can only go in the recycling if it's attached to paper, if its not, it goes in the trash.



Student Made Presentation

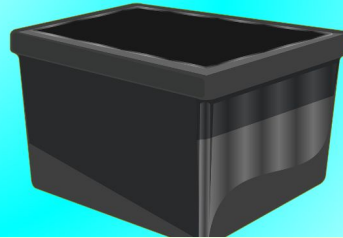
1.2.5 Keep the earth alive.

As you know, plastic goes in the recycling. BUT not all plastic can go in the Recycling. On plastic stuff there is usually a number on the back. If the number says 1, 2 or 5 then its recyclable but if it's not, then it goes in the trash.



Dont put black plastic in the recycling

Black plastic can not go in the recycling because it is mixed with clay.



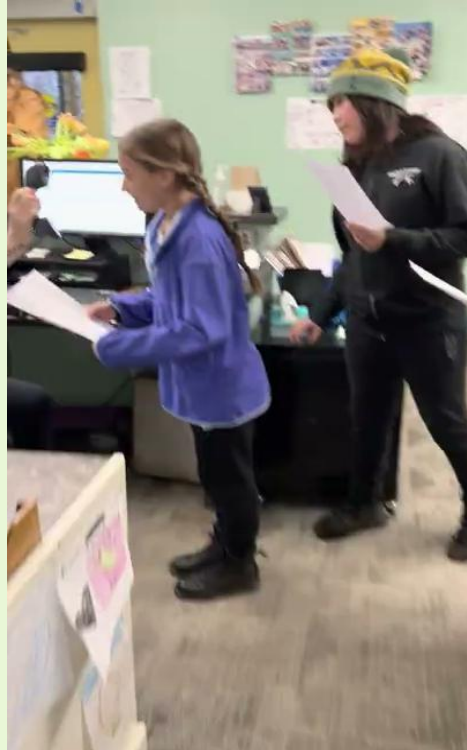
THOSE WERE REALLY IMPORTANT THINGS TO KNOW ABOUT RECYCLING, BUT THERE'S ONE MORE IMPORTANT THING!

To put plastic in the recycling, it has to be clean. If it's not clean, either wash it, or put it in the trash.





Waste Intervention Projects!

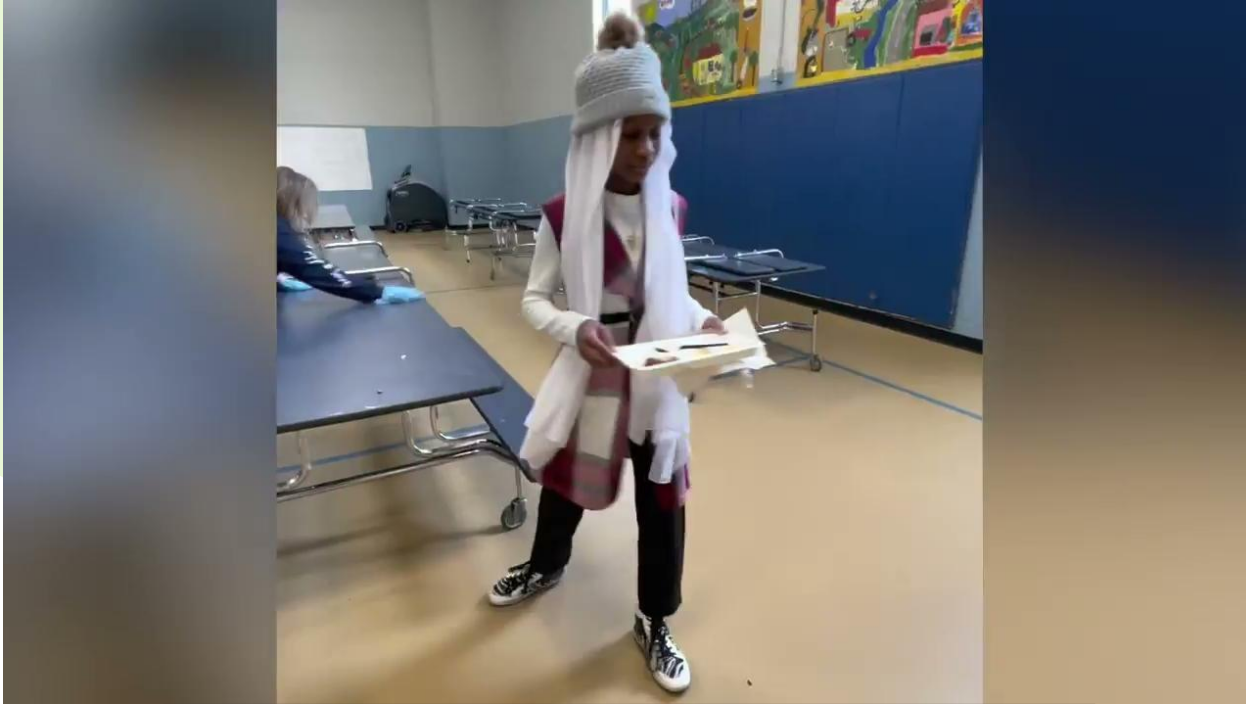


Classes took turns making educational announcements to the whole school





Waste Intervention Projects!



One class created informational videos based on their data.

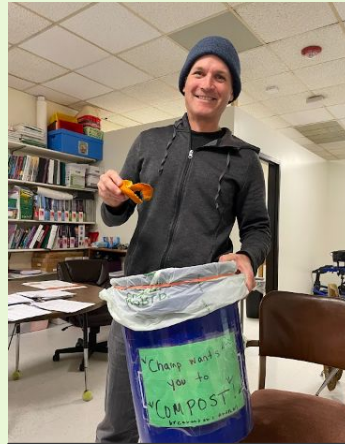


Waste Reduction Intervention Projects

One class focused on improving waste reduction in the adult spaces in our school. They created signage, added bins, and made announcements to educate the staff.



New compost bin for the music room!



New compost bin for the SPED office!



New signage and bins for the front office



New signage and bins for the nurse

Visit to Green Mountain Compost



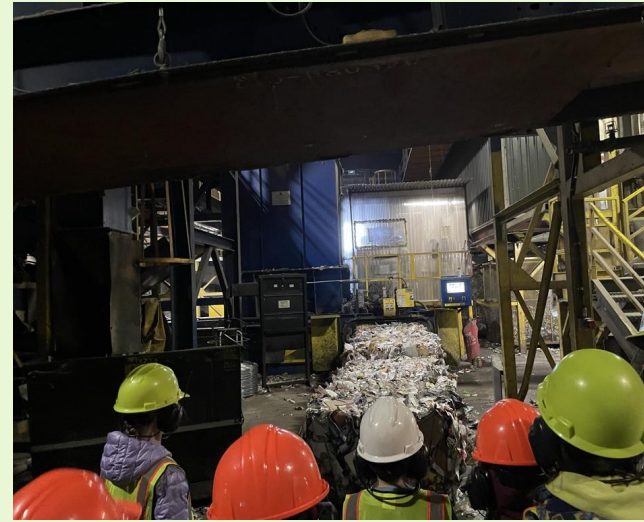
Visit to Green Mountain Compost



Visit to the MRF

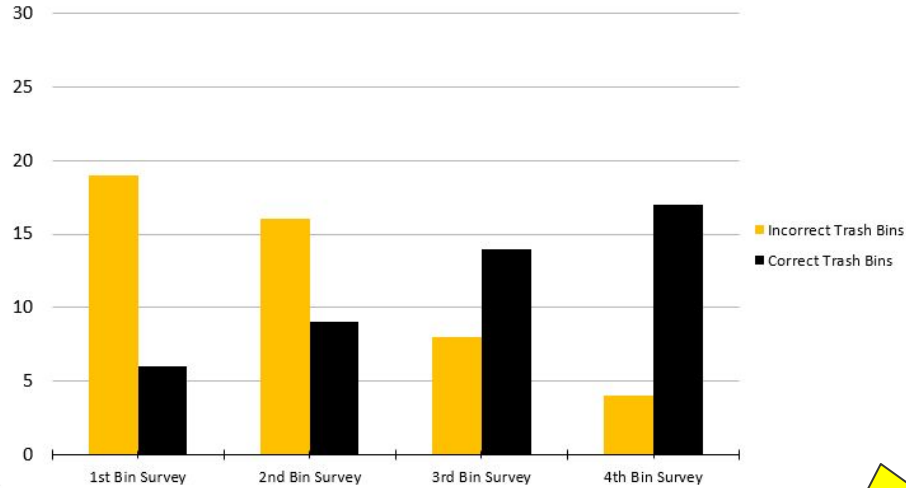


Visit to the MRF

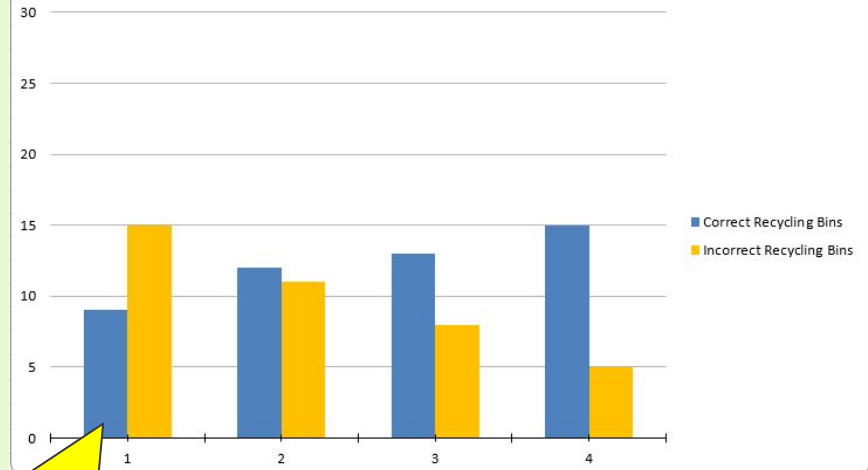


Recycle Rally Data


Trash Bin Survey Results



Recycle Bin Survey Results



Our trends steadily improving after each intervention!

The background is a light green color. It features several illustrations: a branch with small green leaves in the top left; a single green plastic bottle in the top center; a branch with larger green leaves in the bottom right; and a dark green recycling bin in the bottom left, overflowing with several green plastic bottles. The bin has a white recycling symbol on its front.

“You are never too small to make a difference.”

— **GRETA THUNBERG**



Final Projects!

Students created a slideshow presentation to reflect on their learning and projects.



Summary

After all of our data collection we frequently observed an abundance of paper towels within the trash bin rather than the compost when they are made of natural materials and are most perfectly fit to become part of the earth once more. With our fourth bin survey, though some bins were incorrect for other reasons, there was no visible paper towels showing great change after our presentation.



Reflection

To improve our school we have made a few different projects and learned a lot about recycling and compost. We made posters and gave presentations in order to influence the correct ways of composting and recycling within this school. We think we could make more posters not only for classrooms but the hallways as well with the hope to spread the word even more.



Tell us about your classrooms

- The teachers for Ms.Bellavance's class are Ms.Bellavance, Ms Spear and a Paraprofessional. The teachers for Bright Start are Ms.Vi and Mr. Eric
- The grades for our classes are Kindergarten (Ms.Bellavance) and in between pre k and kindergarten (Bright Start)
- Both classrooms have Trash, Recycling, and Compost. Which means both classes have 3 bins each. Both classes also eat lunch and snack in their classrooms.



**Thank you CSWD for helping
us reduce our waste!**

