
CSWD would like to thank the
VT Department of Health Diabetes
Program staff for their assistance
and photos.

Need sharps stickers?
Call the CSWD Hotline:
802-872-8111.



1021 Redmond Road, Williston, VT 05495
www.cswd.net

HOTLINE: 872-8111

Printed on recycled paper.

02/12

**GET
THE
POIN**



**Be safe
with
syringes
and other
sharps**

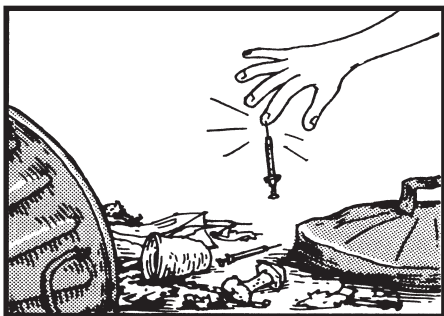
**A Home Guide to
Sharps Disposal
for Residents of
Chittenden County**



The Problem

Syringes, lancets, and other sharp items used to treat diabetes, allergies, and other medical conditions are called **sharps**. Discarding loose sharps in the trash can accidentally hurt anyone who handles the trash.

Used sharps can transmit germs. Diseases such as Hepatitis B can result from someone being accidentally stuck by sharps.



The Solution

It's safer to dispose of sharps in a thick plastic container such as empty laundry detergent bottle, which is more puncture-resistant than most other types of plastic bottles commonly found in the home. Soda bottles are NO LONGER thick and puncture-proof enough for this use.

If you participate in a take-back or mail-back program:

Follow the return instructions that come with the program. **DO NOT** put these containers in the recycling bin or trash.

If you want to dispose of sharps in your trash:

1 CHOOSE A CONTAINER

Use a rigid plastic container such as a laundry detergent bottle with a screw-on cap. **DO NOT** use a soda bottle or food-storage container.



2 LABEL

Label your container with the warning "DO NOT RECYCLE."

Use a homemade label or a sticker provided by CSWD (available at some pharmacies and medical offices; or call CSWD at 872-8111).

3 STORE

Carefully put each of your used sharps into the bottle. Store the bottle out of reach of children.

4 SEAL & DISPOSE

When the bottle is 2/3 full, put heavy tape over the closed bottle cap for disposal in your household trash—**NOT** in



your recycling bin. Now your sharps are in a container that protects people from being stuck and is unlikely to break open on its way to the landfill.